



Builder Solution



ALUMINUM CLAD WOOD

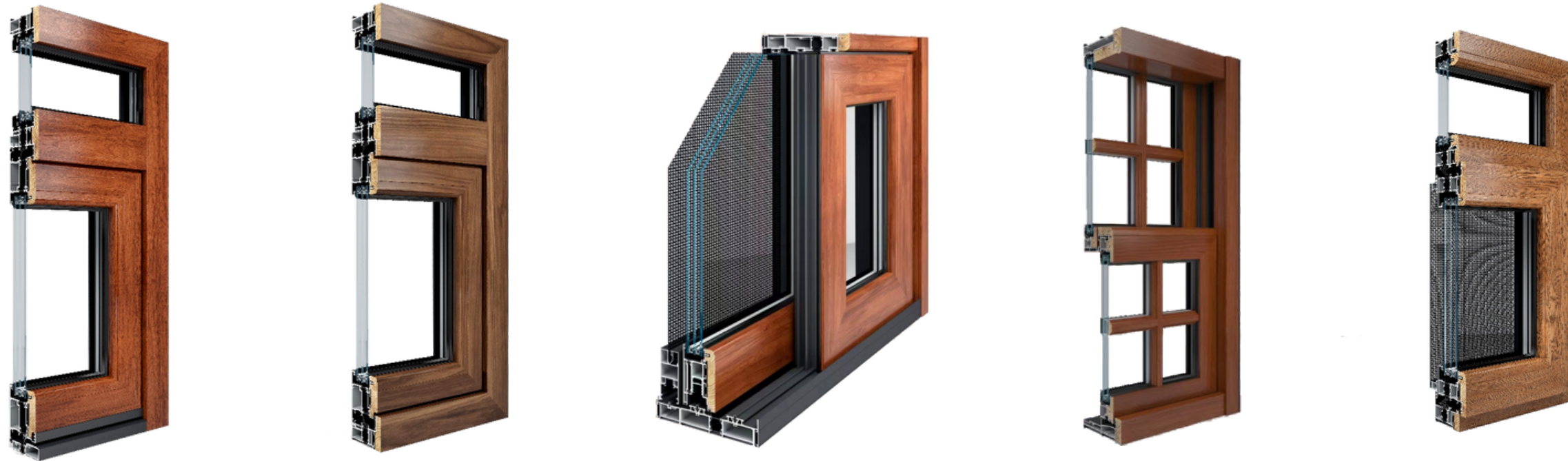


WINDOWS & DOORS

BUILDING MATERIALS

Characteristics of aluminum-clad wood:

1. Aluminum-clad wood windows and doors adopt a structure with aluminum on the outside and wood on the inside. The outdoor aluminum is not only waterproof and
2. The indoor wood surface is sprayed with imported special paint, which is not only moisture-proof and anti corrosion but also has various colors, which make the build
3. The combined structure of thermal break + hollow + aluminum-clad wood greatly enhances sound insulation, sealing, and thermal insulation performance, significant
4. The standard wood species is American red oak, with optional choices including Burma teak, black walnut, cherry wood, and rosewood.



ALUMINUM CLAD WOOD
WINDOWS & DOORS



C-channel System (European Standard)

HARDWARE SYSTEM

OUR PROFILES ARE SUITABLE FOR MOST OF FAMOUS DOMESTIC AND INTERNATIONAL BRAND OF HARDWARE



CMECH

HOPPE®

HOPO

KIN LONG 坚朗

.....

Roto Frank/STORO/ Siegenia/ CMECH / HOPO/ Hoppe/ Kinlong.....





ALUMINUM CLAD WOOD NEW DESIGN FEATURES

In Order To Increase The Stress Of Frame

We Design The Best Aluminum Moulds

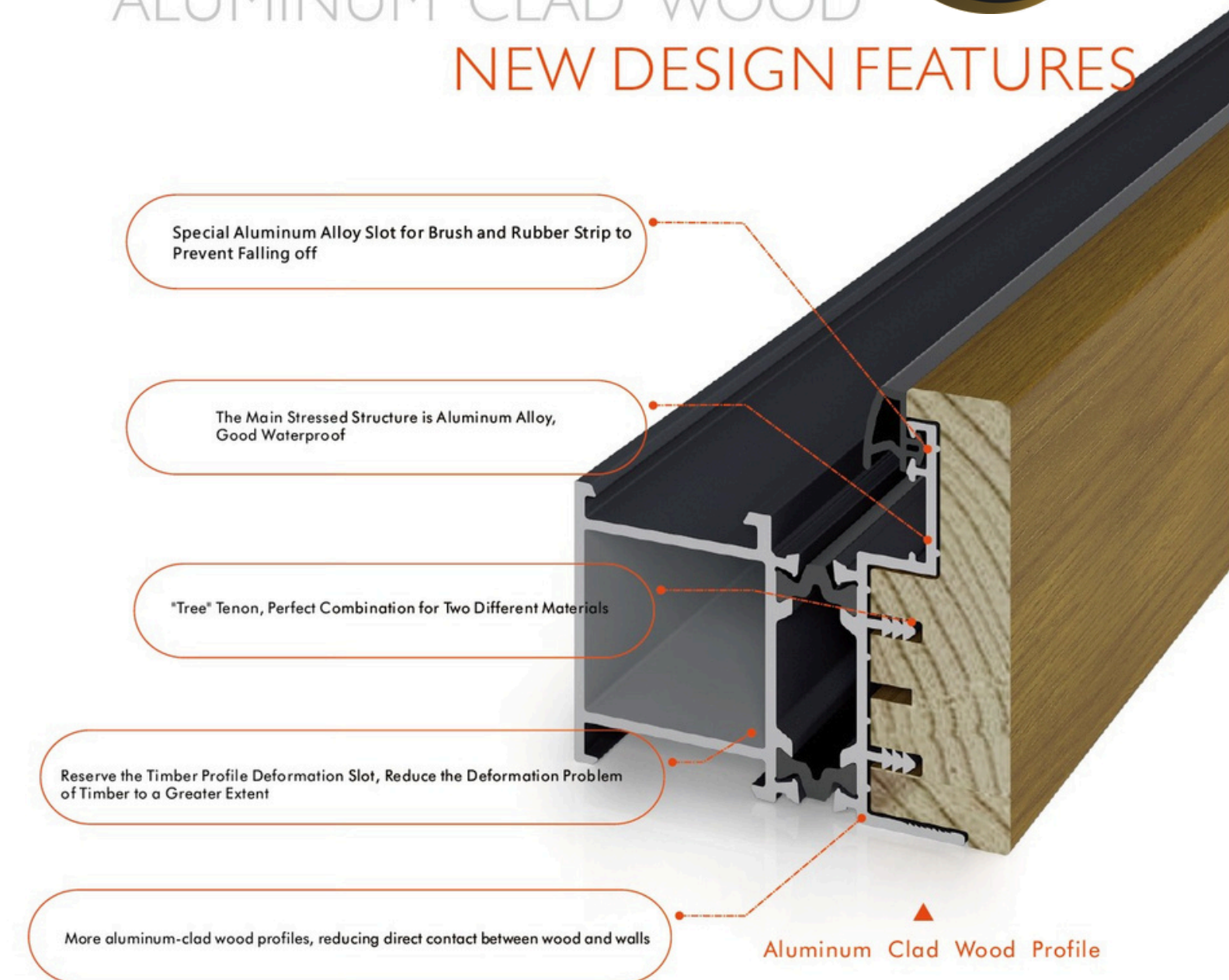
To Make Sure The Stress Forces Are In The Aluminum Not Wood

In Order To Prevent The Weather Stripping And Sealing Strips from falling off

We Put The Them On Aluminum

By Contrast, It Is More Stable

Characteristics of aluminum-clad wood



COLORFUL WINDOW COLORFUL LIFE

A vivid Oicture of a Hidden Past, A discourse on the
Enrichment Step in the Colorful Life.



Aluminum Clad Wood Window And Door

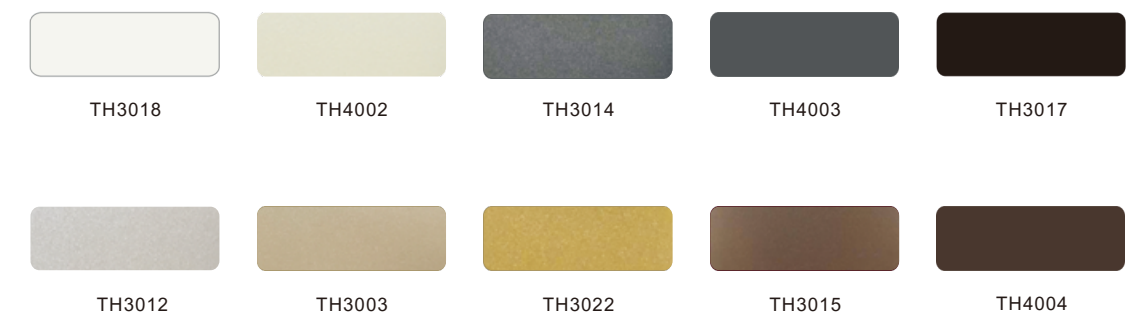


WOOD & COLOR



ALUMINUM CLAD WOOD WINDOW & DOOR

ALUMINUM COLOR



Above colors may be a slight deviation phenomenon, please in kind prevail.
Support More Kinds of Wood and Wood Grain for Aluminum.Welcome to Contact us.

ALUMINUM-CLAD WOOD WINDOW INTEGRATED
INWARD OPENING WINDOW/WINDOW SCREEN

TH 75

Profile: Aluminum clad wood Profile,6063-T5

Thickness: 1.8mm

Glaze: Rabbet 33mm,Double Tempered Glass (Standard),
Low-E/Triple Glass/Internal Grille/Internal Blind(Optional)
/Triple glazing

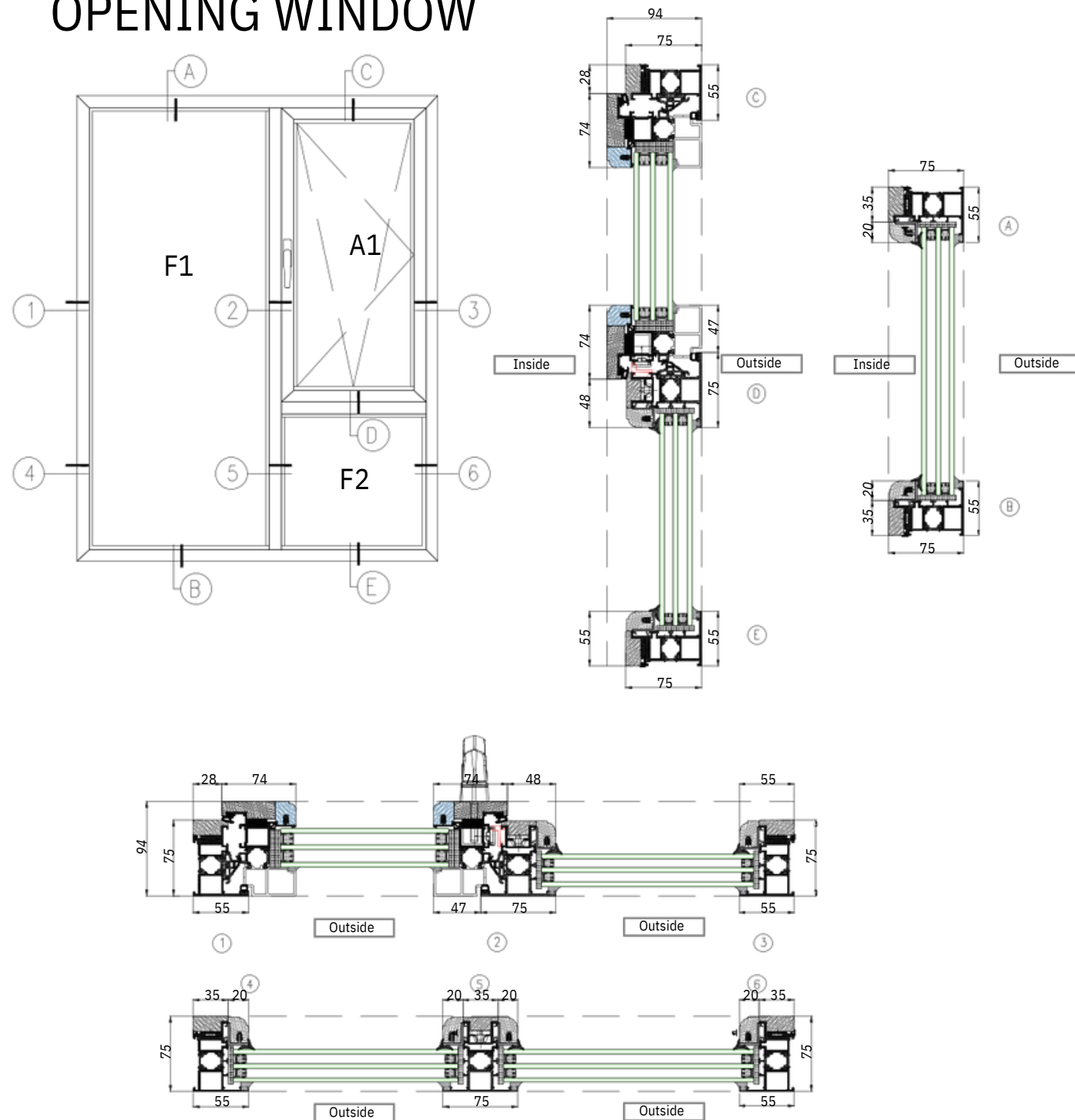
Hardware: Germany ROTO/SIEGENIA/ CMECH

Screen: 304SS Anti-Thief Screen/Mosquito Screen/Protective Barrier

Wood: America Oak(Standard), Burma Teak/Dark Walnut/Cherry
Wood/Red Rosewood(Optional)

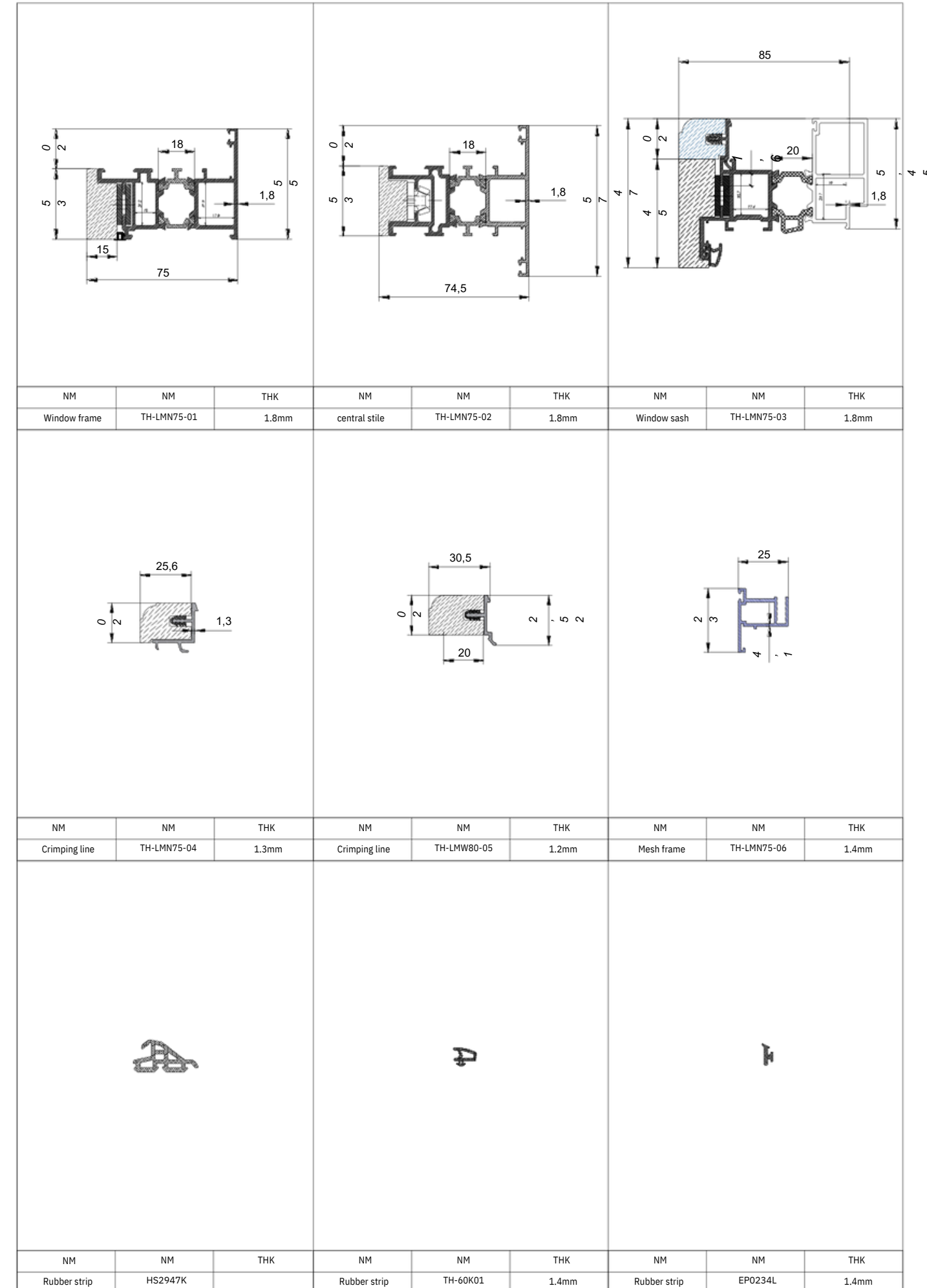


TH-75ALUMINUM-CLAD WOOD WINDOW INTEGRATED INWARD OPENING WINDOW



Profile wall thickness: 2.0MM
 Wood panel thickness: 16MM to 20MM
 Sash width specifications: 400mm - 900mm
 Sash height specifications: 400mm - 2600mm
 Hardware brand: Italian Sterry
 Maximum load capacity: 80kg
 Standard glass: 5mm + 20A + 5mm double-layer tempered insulating glass
 Optional blinds: Magnetic control blinds and electric blinds
 Water tightness performance: 700Pa
 Sound insulation performance: Rw33dB
 Thermal insulation performance: Uw1.9W/m²K
 Wind pressure resistance performance: 5000Pa

TH-75 Cross-section diagram of tilt and turn window profiles



ALUMINUM CLAD WOOD WINDOW OUUWARD OPENING WINDOW

TH 80

Profile: Aluminum clad wood profile, 6063-T5

Thickness: 2.0mm

Glaze: Rabbet 33mm, double tempered glass (standard),
Low-E/ triple glass/ internal grille/ internal blind (optional)
/ triple glazing

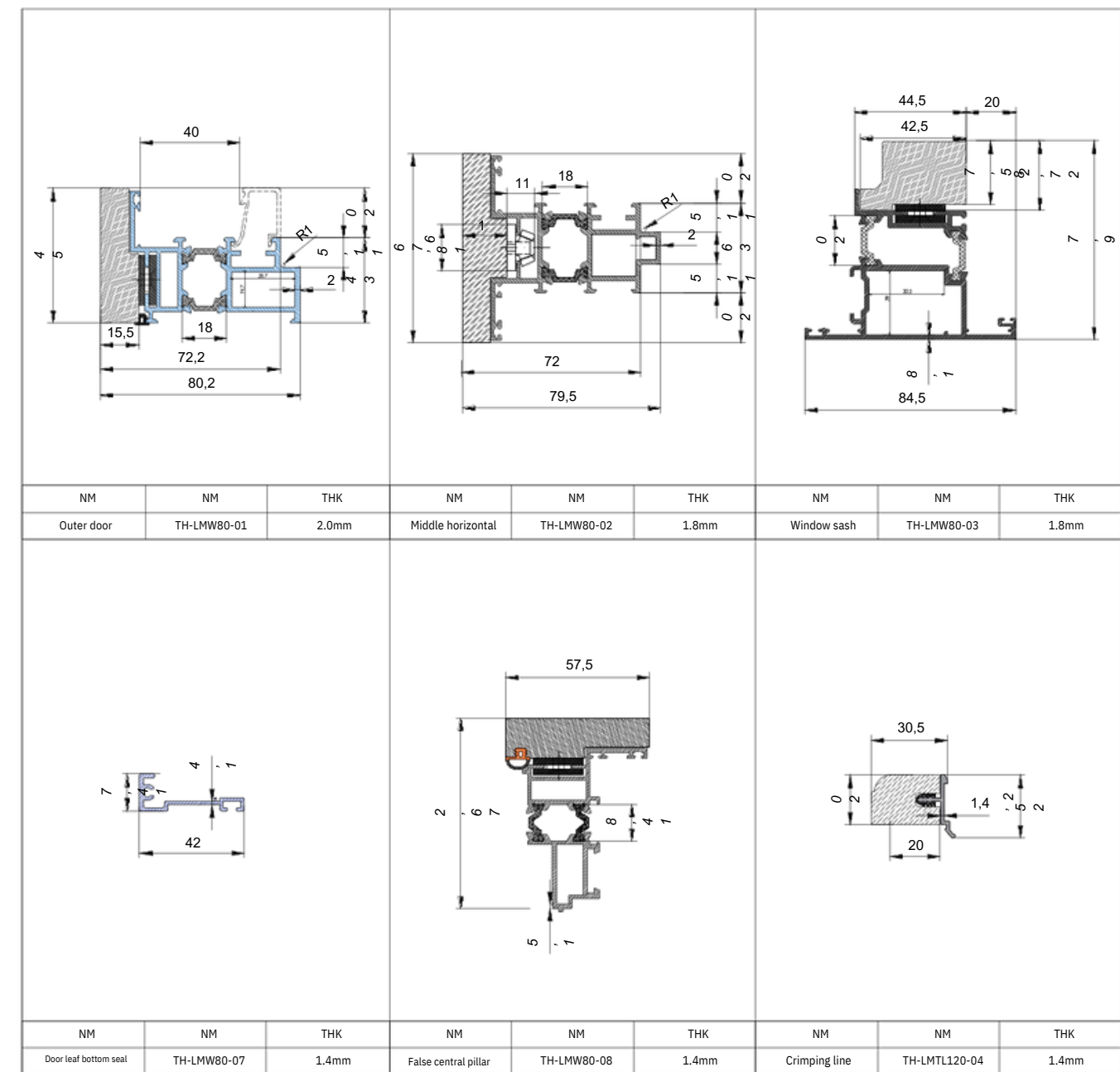
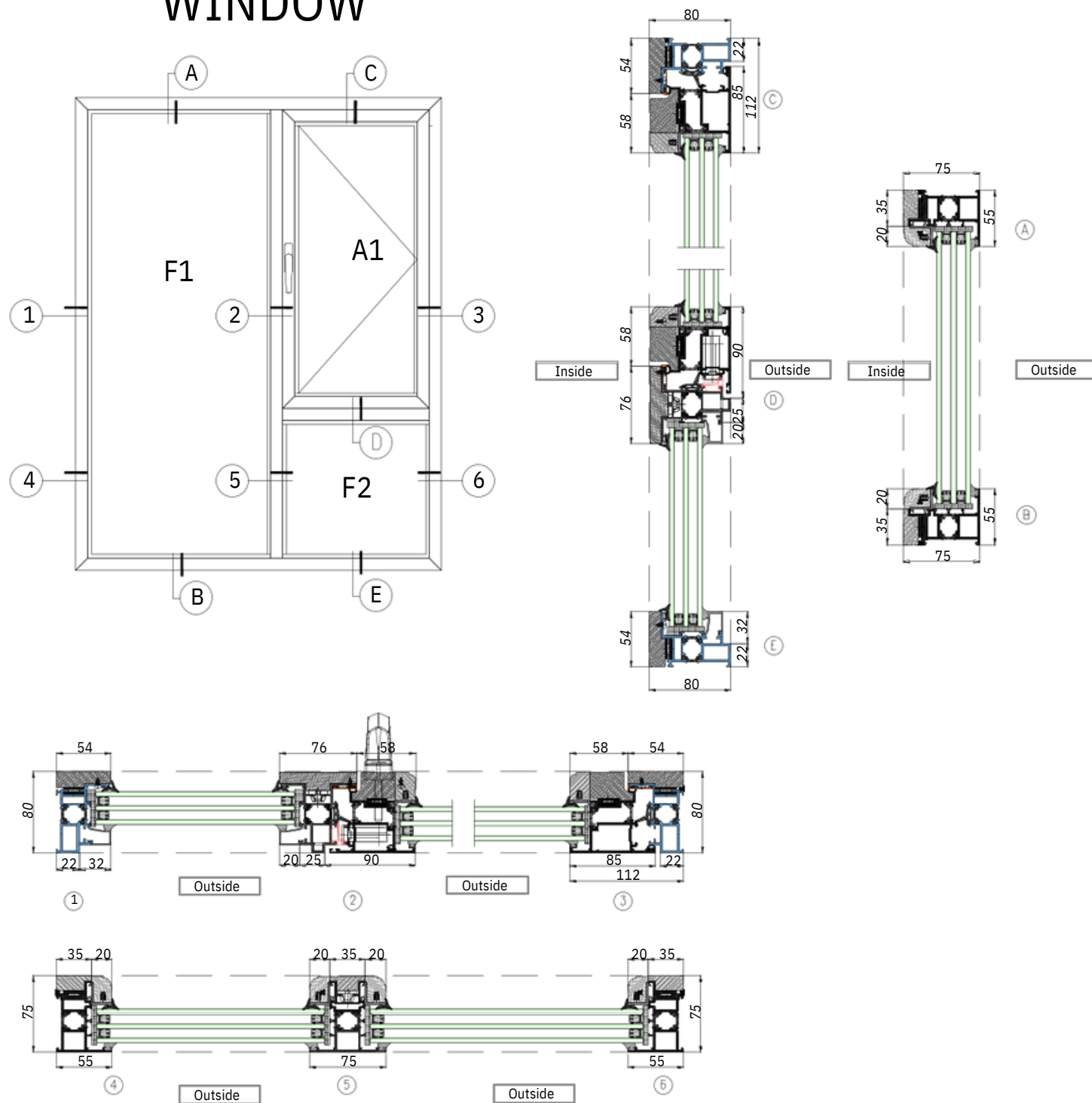
Hardware: Germany ROTO/ SIEGENIA/ CMECH

Wood: America oak (Standard) , Burna teak/ dark walnul/
cherry wood/ rosewood (optional)



TH-80 OUTWARD OPENING WINDOW

TH-80 OUTWARD OPENING WINDOW Profile Diagram



Profile thickness: 2.0MM
 Wood panel thickness: 16MM to 20MM
 Sash width specifications: 400mm - 900mm
 Sash height specifications: 400mm - 2600mm
 Hardware brand: Italian Sterry
 Maximum load capacity: 80kg
 Standard glass: 5mm + 20A + 5mm double-layer tempered insulating glass
 Optional blinds: Magnetic control blinds and electric blinds
 Water tightness performance: 700Pa
 Sound insulation performance: Rw33dB
 Thermal insulation performance: Uw1.9W/m²K
 Wind pressure resistance performance: 5000Pa





ALUMINUM CLAD WOOD WINDOW OUTWARD OPENING DOOR

TH 80

Profile: Aluminum clad wood profile, 6063.T5

Thickness: 2.0mm

Glaze: Rabbet 33mm, double tempered glass (standard),
Low-E/ triple glass/ internal grille/ internal blind (optional)
/ triple glazing

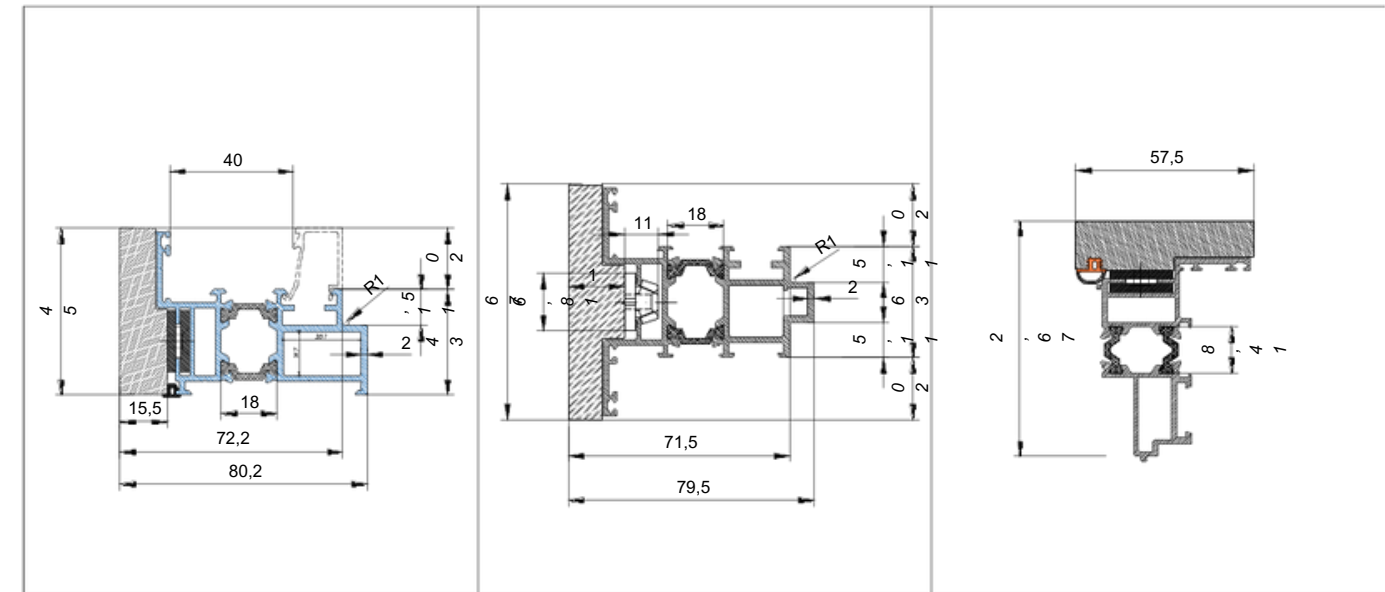
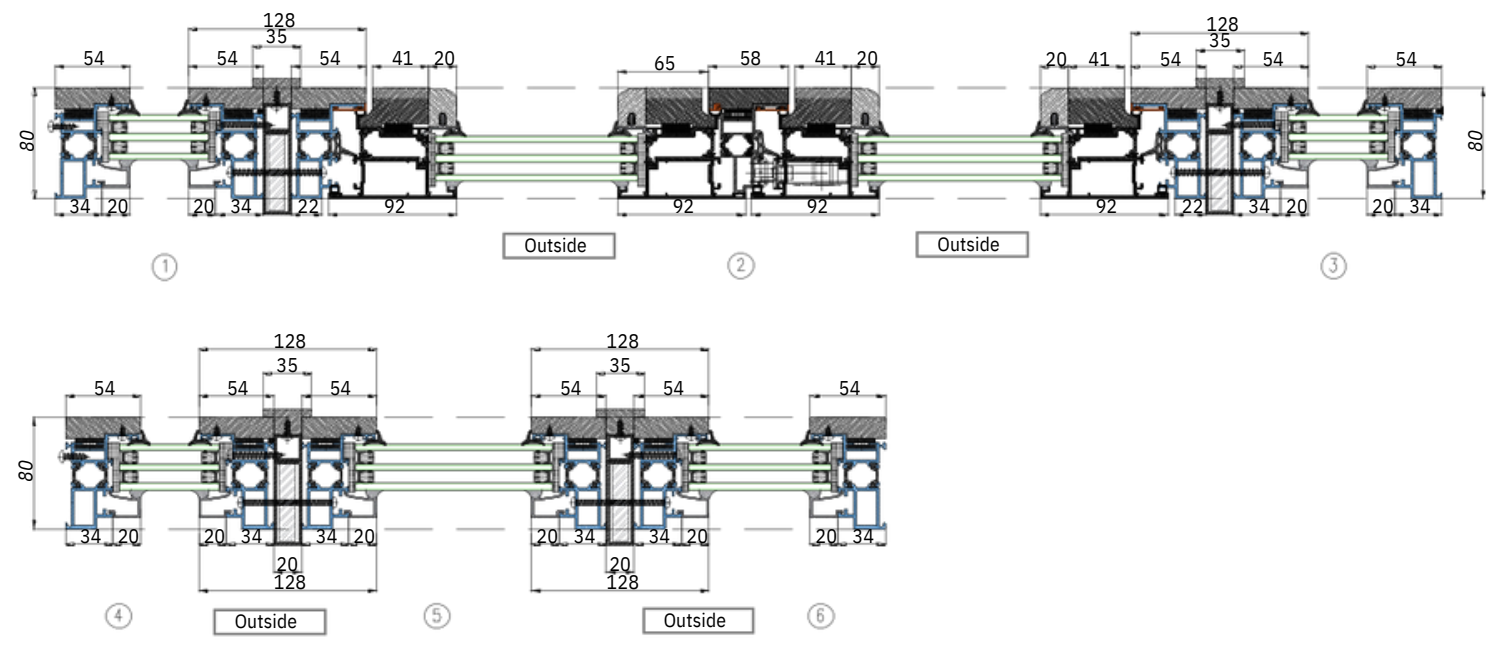
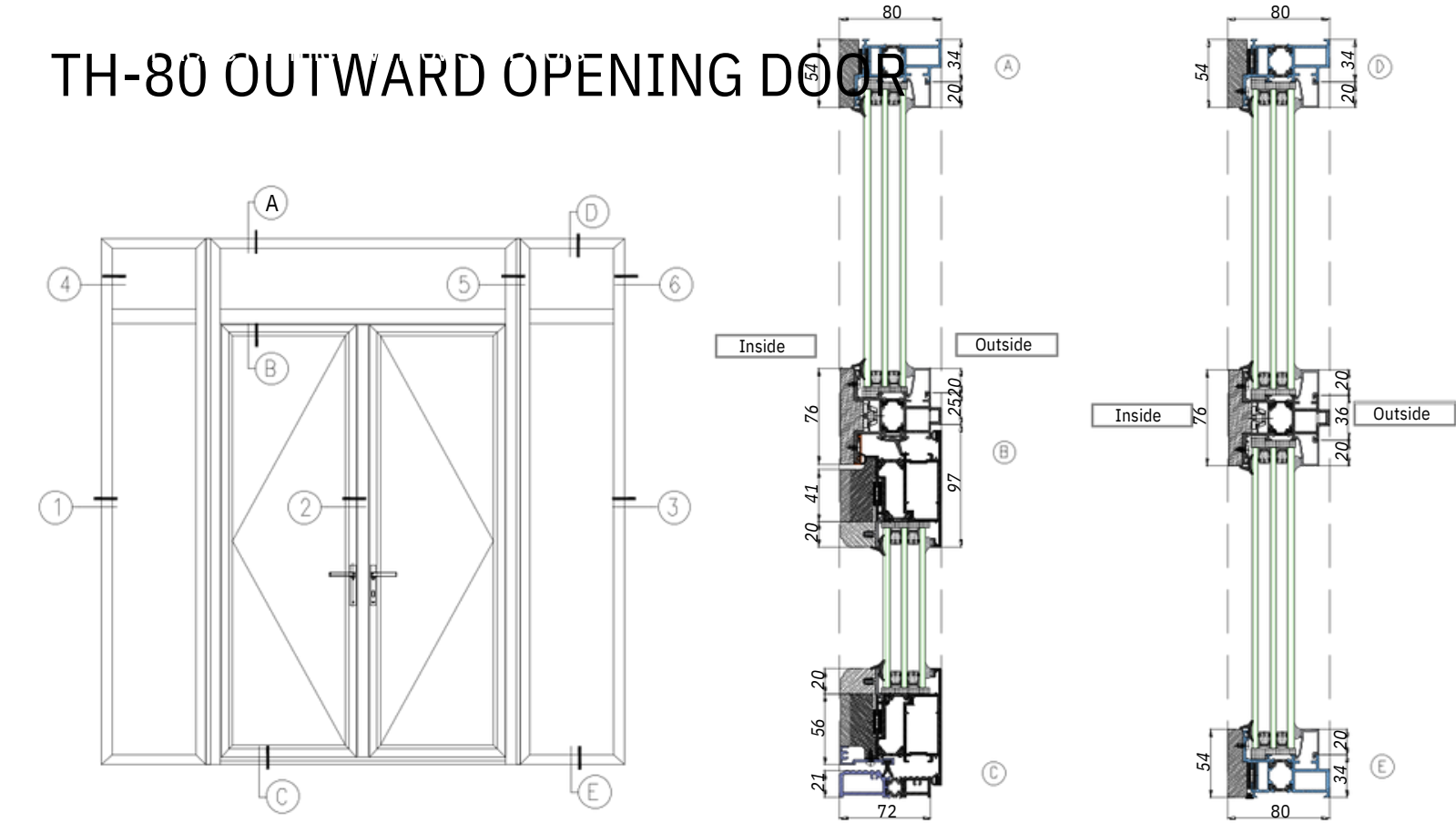
Hardware: Germany ROTO/ SIEGENIA/ CMECH

Wood: America oak (Standard) , Burned teak/ dark walnut/
cherry wood/ rosewood (optional)

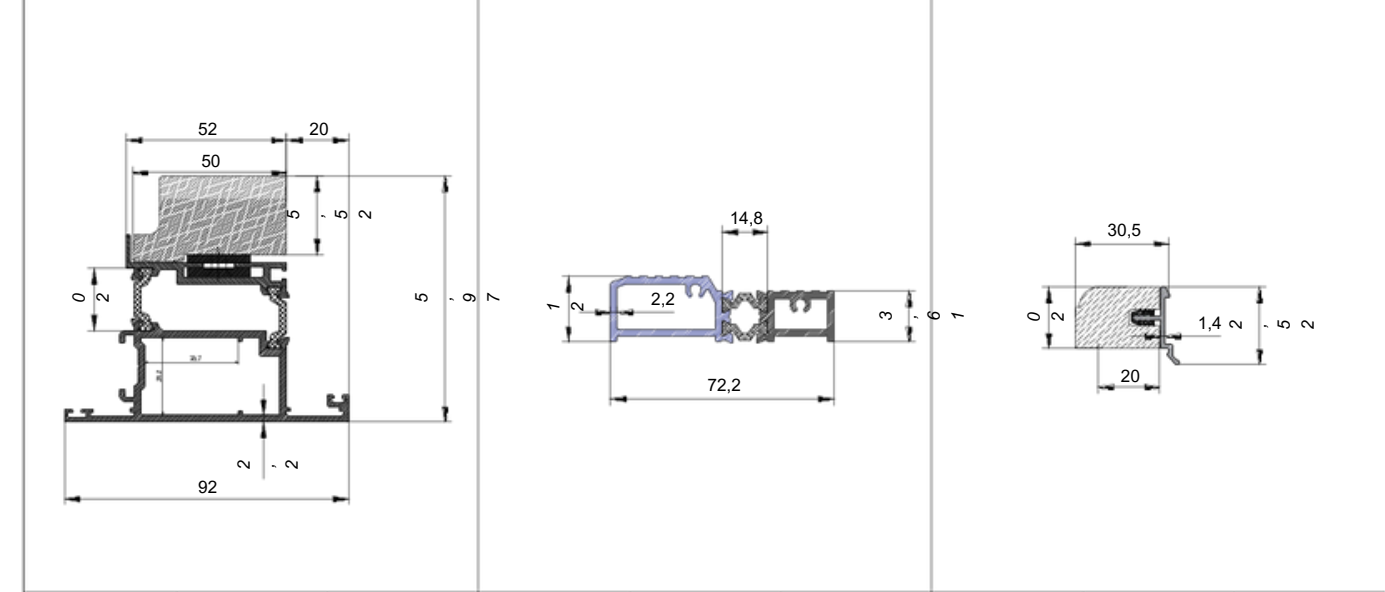


TH-80 OUTWARD OPENING DOOR

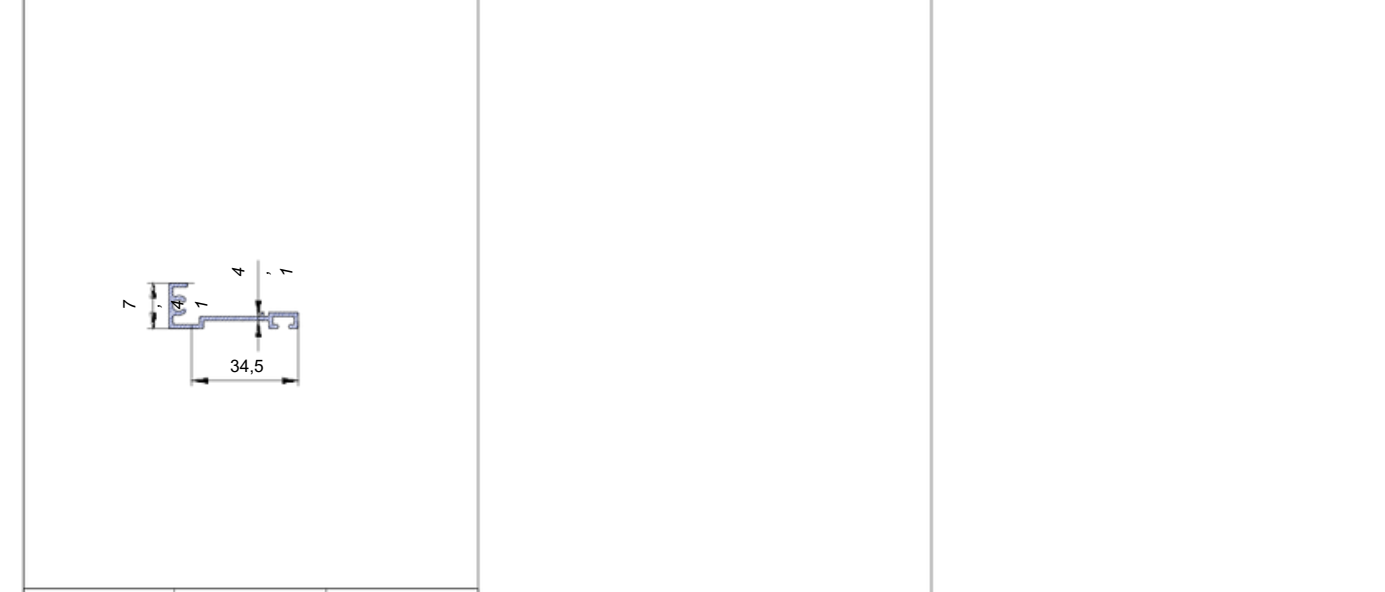
TH-80 OUTWARD OPENING DOOR Profile Diagram



NM	NM	THK	NM	NM	THK	NM	NM	THK
Outer door	TH-LMW80-01	2.0mm	Middle horizontal	TH-LMW80-02	1.8mm	False central pillar	TH-LMW80-08	1.4mm



NM	NM	THK	NM	NM	THK	NM	NM	THK
Door leaf	TH-LMW80-03M	2.2mm	Low threshold	TH-LMW80-04	2.2mm	Crimping line	TH-LMTL120-04	1.4mm



NM	NM	THK
Door leaf bottom seal	TH-LMW80-07	1.4mm

- Profile thickness: 2.0MM
- Wood panel thickness: 16MM to 20MM
- Sash width specifications: 400mm - 900mm
- Sash height specifications: 400mm - 2600mm
- Hardware brand: Italian Sterry
- Maximum load capacity: 80kg
- Standard glass: 5mm + 20A + 5mm double-layer tempered insulating glass
- Optional blinds: Magnetic control blinds and electric blinds
- Water tightness performance: 700Pa
- Sound insulation performance: Rw33dB
- Thermal insulation performance: Uw1.9W/m²K
- Wind pressure resistance performance: 5000Pa



ALUMINUM CLAD WOOD SINGLE HUNG WINDOW WITH INSECT SCREEN

TH 120

Profile: Aluminum clad wood profile,6063-T5

Thickness: 1.5mm

Glass: Rabbet 25mmdouble tempered glass(standard), low-e glass/ internal grille). It's available matching with hollow aluminum wood decorative grille.

Option:Equip with insect screen

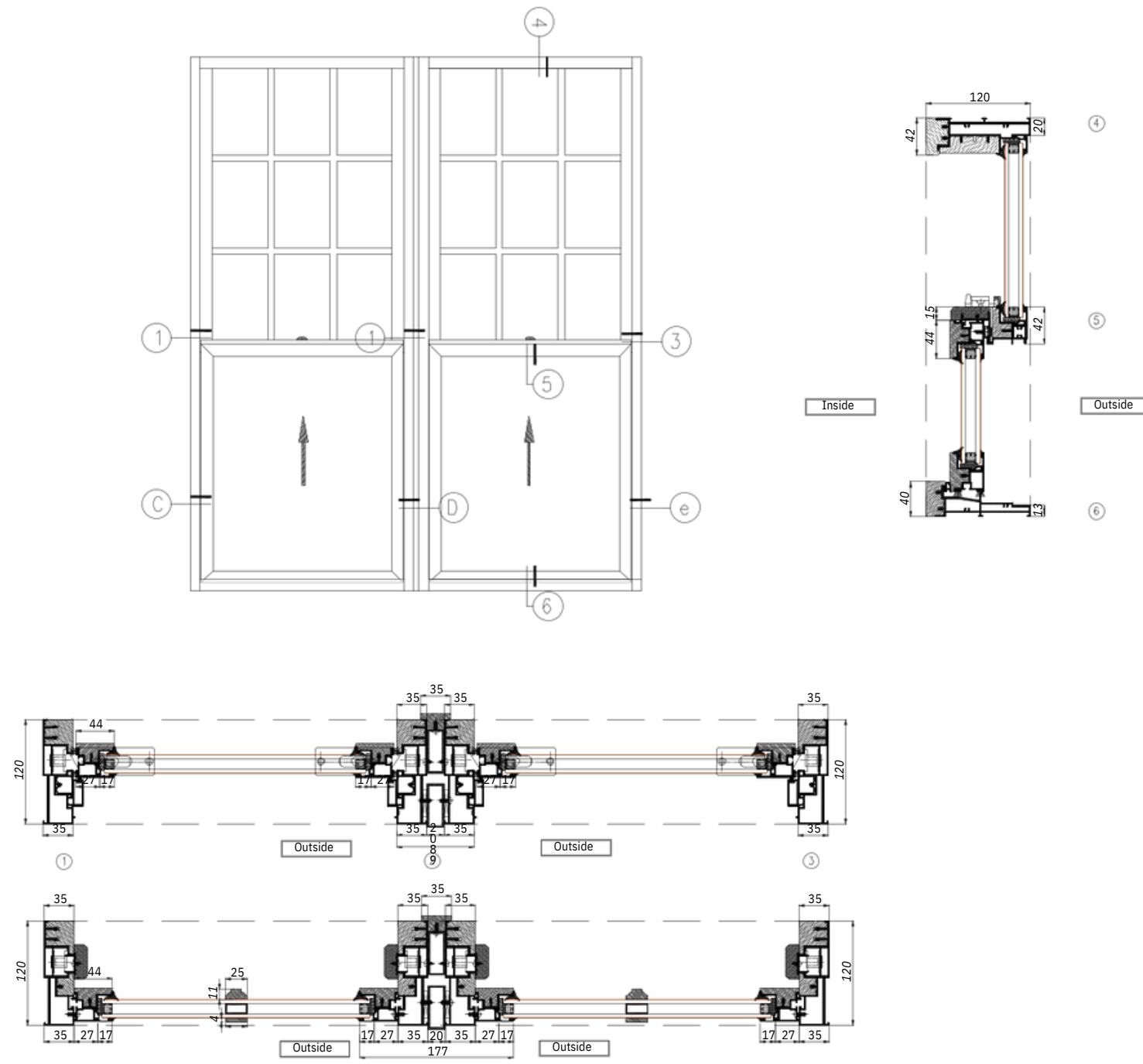
Hardware: America Caldwell

Wood: America oak (Standard) , Burna teak/ dark walnut/ cherry wood/ rosewood (optional)



TH-120 Single Hung Window

TH-120 Single Hung Window Profile Drawing



Aluminum profile thickness: 1.5MM
 Wood panel thickness: 21MM to 38MM
 Sash width specifications: 400mm - 900mm
 ash height specifications: 400mm - 2000mm
 Hardware brand: American Kawneer
 Maximum load capacity: 35kg
 Standard glass: 5mm + 12A + 5mm double-layer tempered insulating glass
 Optional configuration: Aluminum-wood decorative grille for hollow glass
 Water tightness performance: 500Pa
 Sound insulation performance: Rw29dB
 Thermal insulation performance: Uw2.2W/m²K
 Wind pressure resistance performance: 4000Pa

NM	NM	THK	NM	NM	THK	NM	NM	THK
Window Head	TH-LMTL120-01	1.5mm	Window Sill	TH-LMTL120-02	1.4mm	Window Frame	TH-LMTL120-03	1.5mm
NM	NM	THK	NM	NM	THK	NM	NM	THK
Window Sash	TH-LMTL120-04	1.4mm	Window Mullion	TH-LMTL120-05	1.4mm	Sash Cover	TH-LMTL120-06	1.2mm
NM	NM	THK	NM	NM	THK	NM	NM	THK
Window Weatherstrip	TH-LMTL120-07	1.0mm	Insertion Strip	TH-LMTL120-08W		Insertion Strip	TH-LKT-01	0.8mm
NM	NM	THK	NM	NM	THK	NM	NM	THK
Glass Clamping	TH-LMTL120-09	1.3mm	Screen Sash	TH-LMTL120-10	1.2mm	Insertion Strip	TH-LKT-01	



THERMAL BREAK ALUMINUM CLAD WOOD HEAVY LIFTING SLIDING DOOR WITH SCREEN

TH 160/210

Profile: Thermal break aluminum clad wood profile, 6063-T5

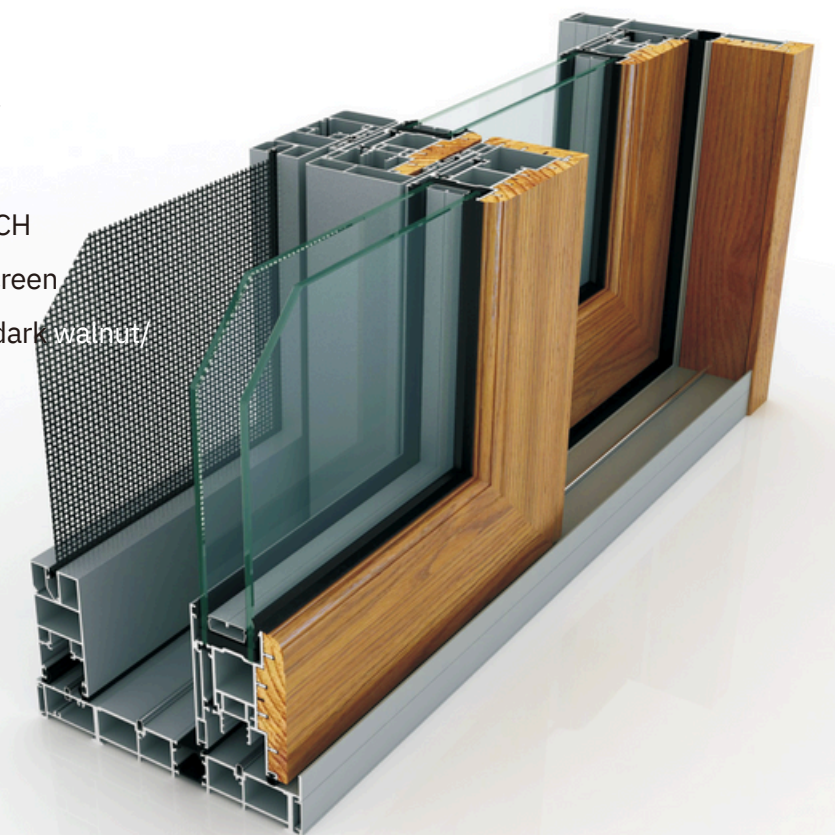
Thickness: 2.2mm

Glaze: Rabbet 33mm, double tempered glass
(standard), low-e/ triple glass/ internal grille/
internal blind (optional)

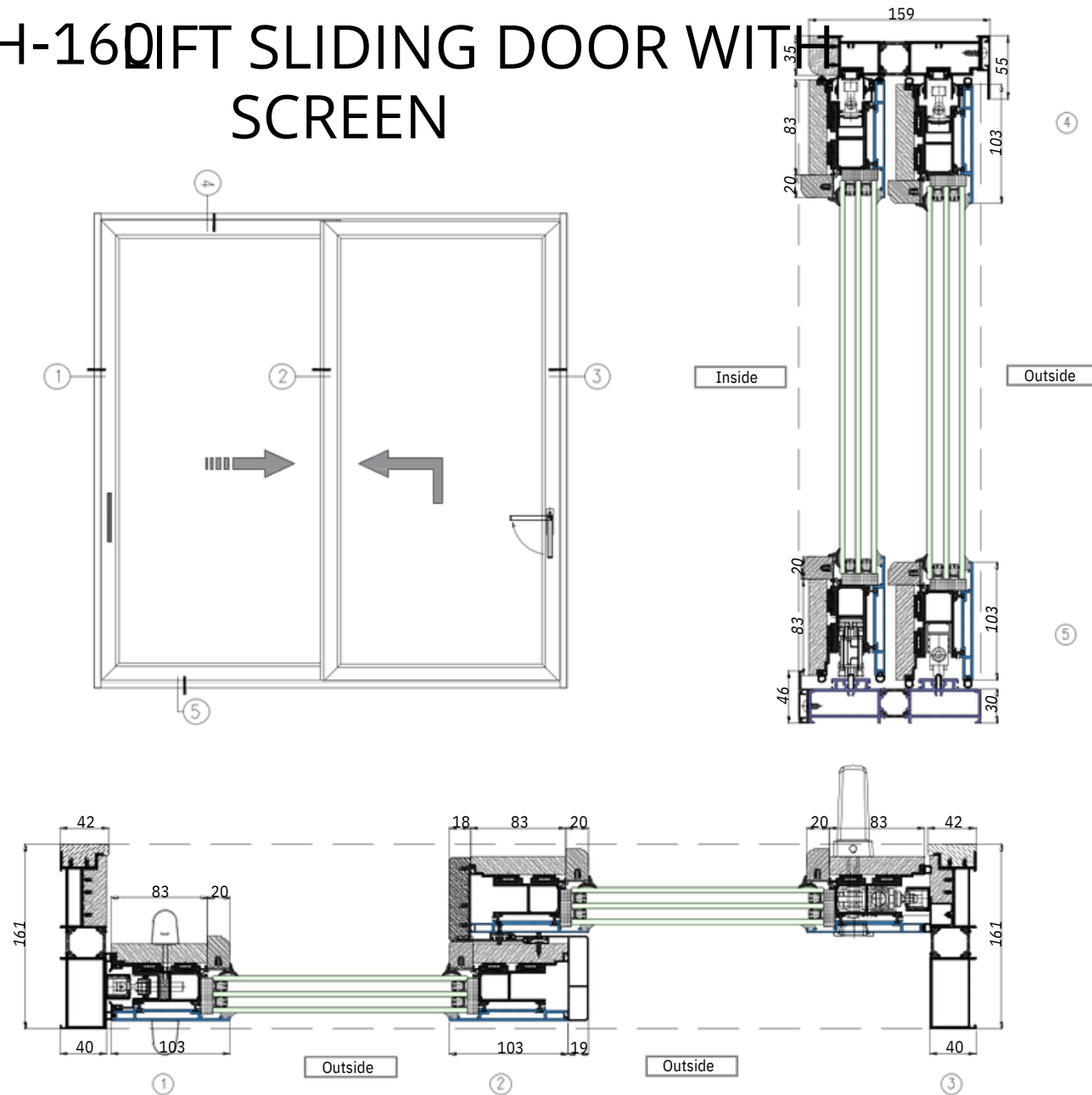
Hardware: Germany ROTO/ SIEGENIA / CMECH

Screen: Equip with 304SS aluminum mesh screen

Wood: America oak (Standard) , Burna teak/ dark walnut/
cherry wood/ rosewood (optional)



TH-160 LIFT SLIDING DOOR WITH SCREEN



- Profile thickness: 2.2MM
- Wood panel thickness: 16MM to 26MM
- Sash width specifications: 600mm - 2500mm
- Sash height specifications: 1200mm - 3200mm
- Hardware brand: CMECH (USA) / G-U (Germany)
- Maximum load capacity: 420kg
- Standard glass: 6mm + 21A + 6mm double-layer tempered insulating glass
- Optional blinds: Magnetic control blinds and electric blinds
- Water tightness performance: 600Pa
- Sound insulation performance: Rw33dB
- Thermal insulation performance: Uw2.2W/m²K
- Wind pressure resistance performance: 5000Pa

LIFT SLIDING DOOR WITH SCR Profile Diagram

NM	NM	THK	NM	NM	THK	NM	NM	THK
Left sealing	TH-LMT160-01L	2.2mm	Right sealing	TH-LMT160-01R	2.2mm	Sliding upward	TH-LMT160-02	2.2mm
NM	NM	THK	NM	NM	THK	NM	NM	THK
Sliding downward	TH-LMT160-03A	2.2mm	Door leaf	TH-LMT160-04A	2.2mm	Wooden door latch	TH-LMT160-05	1.2mm
NM	NM	THK	NM	NM	THK	NM	NM	THK
Aluminum door latch	TH-LMT160-06	1.2mm	Sliding upward	TH-LMT120-04	1.4mm	Drive rod bracket	TH-LMT160-08A	1.4mm
NM	NM	THK	NM	NM	THK	NM	NM	THK
Door leaf clearance	TH-LMT160-09A	1.4mm	Pulley support	TH-LMT160-12A	1.6mm	Door leaf glass clamping	TH-LMW80-05	1.2mm