



Builder Solution US

WOODEN DOOR



858-999-9081



www.BUILDERSOLUTIONUS.COM



INFO@BUILDERSOLUTIONUS.COM



1155 CAMINO DEL MAR

SUITE 423, DEL MAR, CA 92014



- 01** COMPANY INFORMATION.....2
 - CERTIFICATIONS & TEST REPORT.....4

- 02** WOODEN FIRE DOOR.....7
 - PRODUCT STRUCTURE.....7
 - WOODEN FRAME WOODEN LEAF FIRE DOOR14
 - STEEL FRAME WOODEN LEAF FIRE DOOR.....18
 - Door surface treatment.....20
 - PVC PLASIC LAMINAE.....22
 - Wood Veneers.....24
 - HPL.....28
 - MELAMINE LAMINAED FINISH.....28
 - PU PAINING.....30
 - PRIMED DOORS.....32

- 03** INTERIOR WOOD DOOR.....40

- 04** HARDWARE PARTS.....46

- 05** PACKAGING&PRODUCTION LINE..... 48

- 06** PROJECT PORTFOLIO.....52

SOUNDPROOF REPORT

Total Quality Assured.

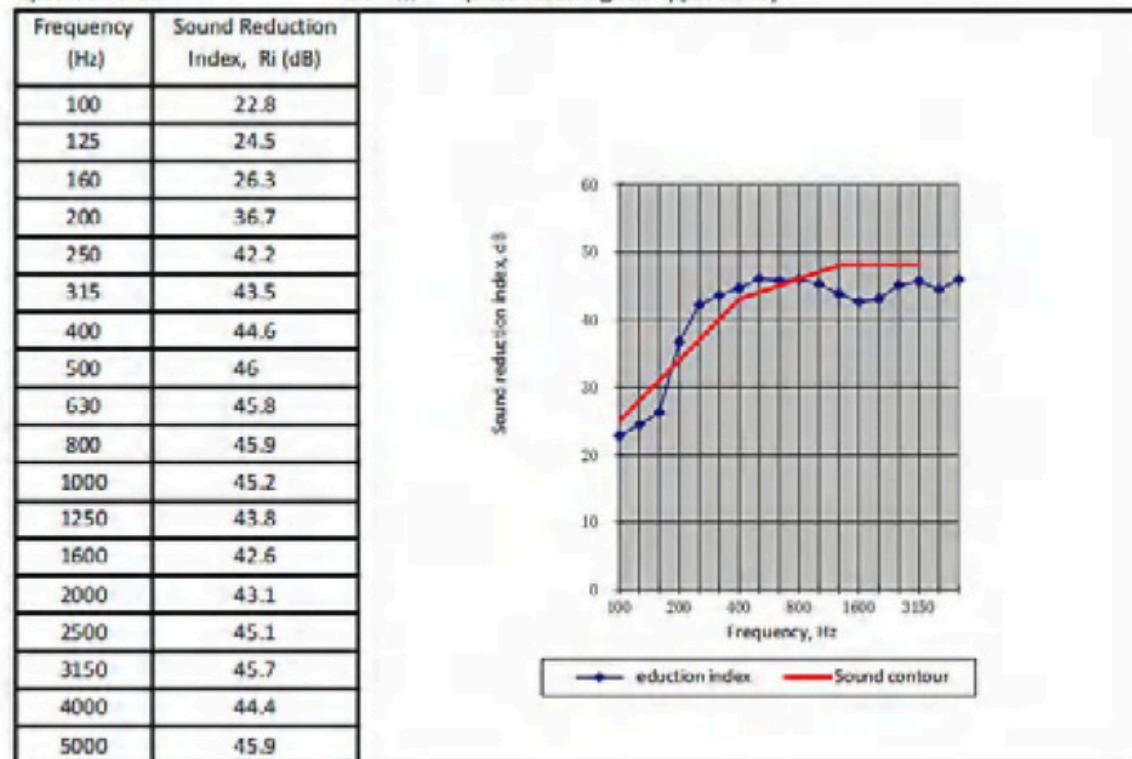
Test Report

Issue Date: 2012-12-08

Test Items, Method and Results:

Test method: ISO 10140-2:2010

Temperature: 26 °C Relative Humidity: 90 %
 Volume of the source room: 112 m³ Volume of the receiving room: 137 m³
 Specimen area: 2.0 m² (Detail drawing see Appendix A.)



Rating according to ISO 717-1:2013

Weighted Sound reduction index	Rw(C;Ctr)= 44(-2;-6)	dB
Spectrum A-weighted pink noise	C= -2	dB
Spectrum A-weighted urban traffic noise	Ctr= -6	dB

Note:

1. Evaluation based on laboratory measurement results obtained by an engineer method.
2. The detail drawing in Appendix A was provided by the applicant. Intertek verified the overall sizes to calculate the

WOODEN FIRE DOOR

// PRODUCT STRUCTURE

FRAME

Various kinds design of frame profiles are available, suitable for different installation environment.

HARDWARE AVAILABLE

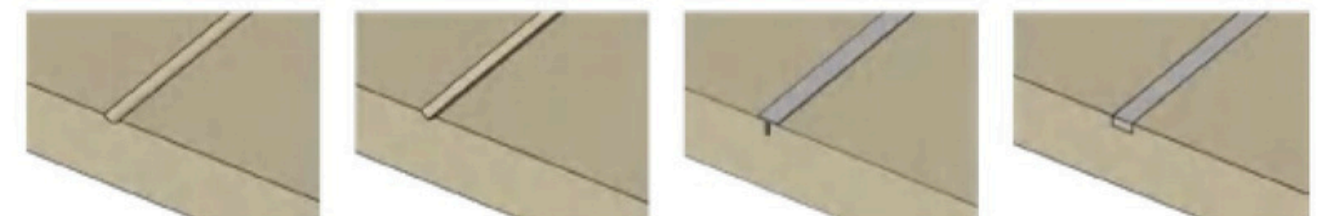
UL/Non-UL panic bar, external level trim, door closer, hinge, flush bolt, vision glass, magnetic door holder, coordinator, smoke seal, handle lock, automatic door bottom seal etc.

OPTION

Door and frame surface finish could be customized according to RAL color chart.

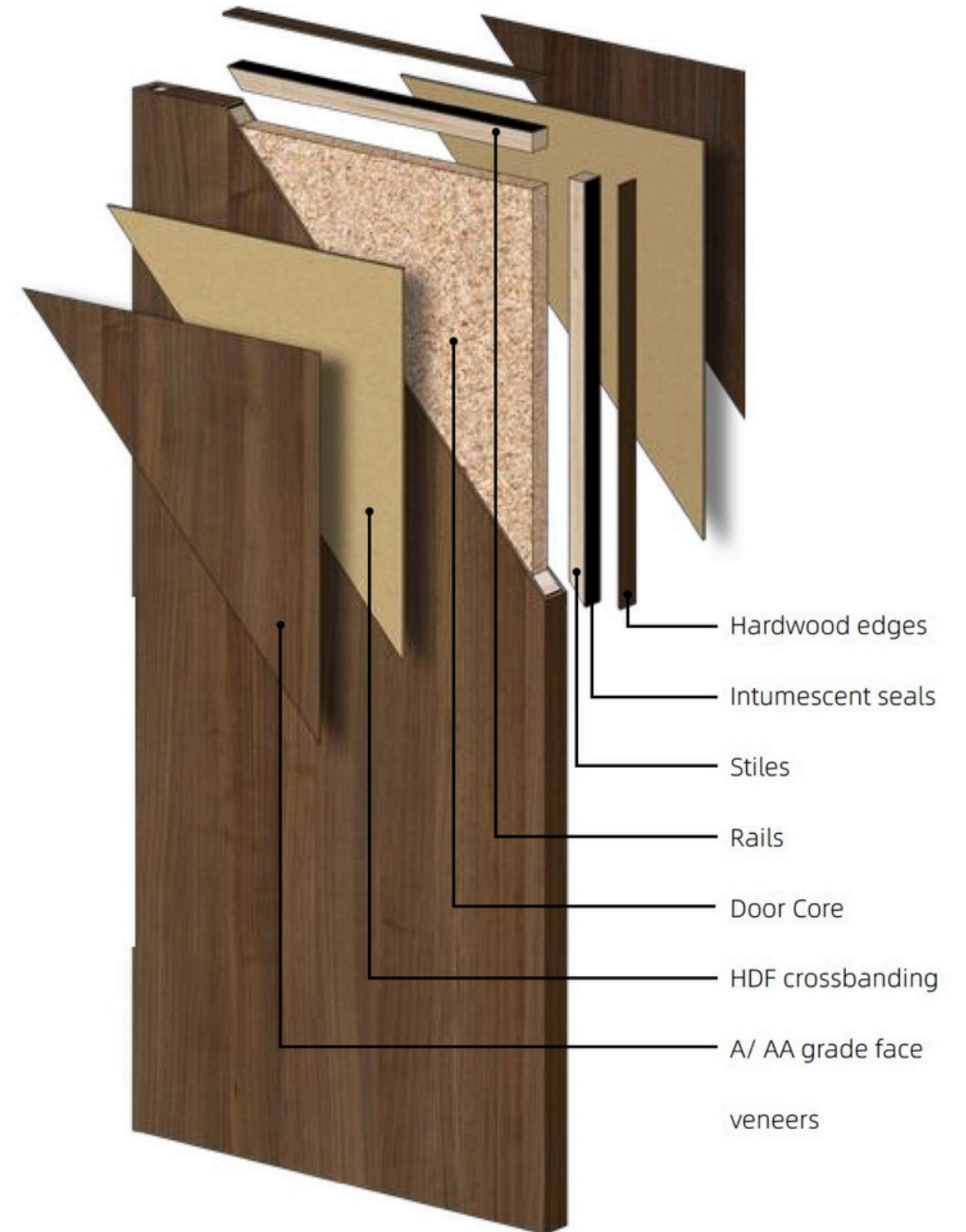
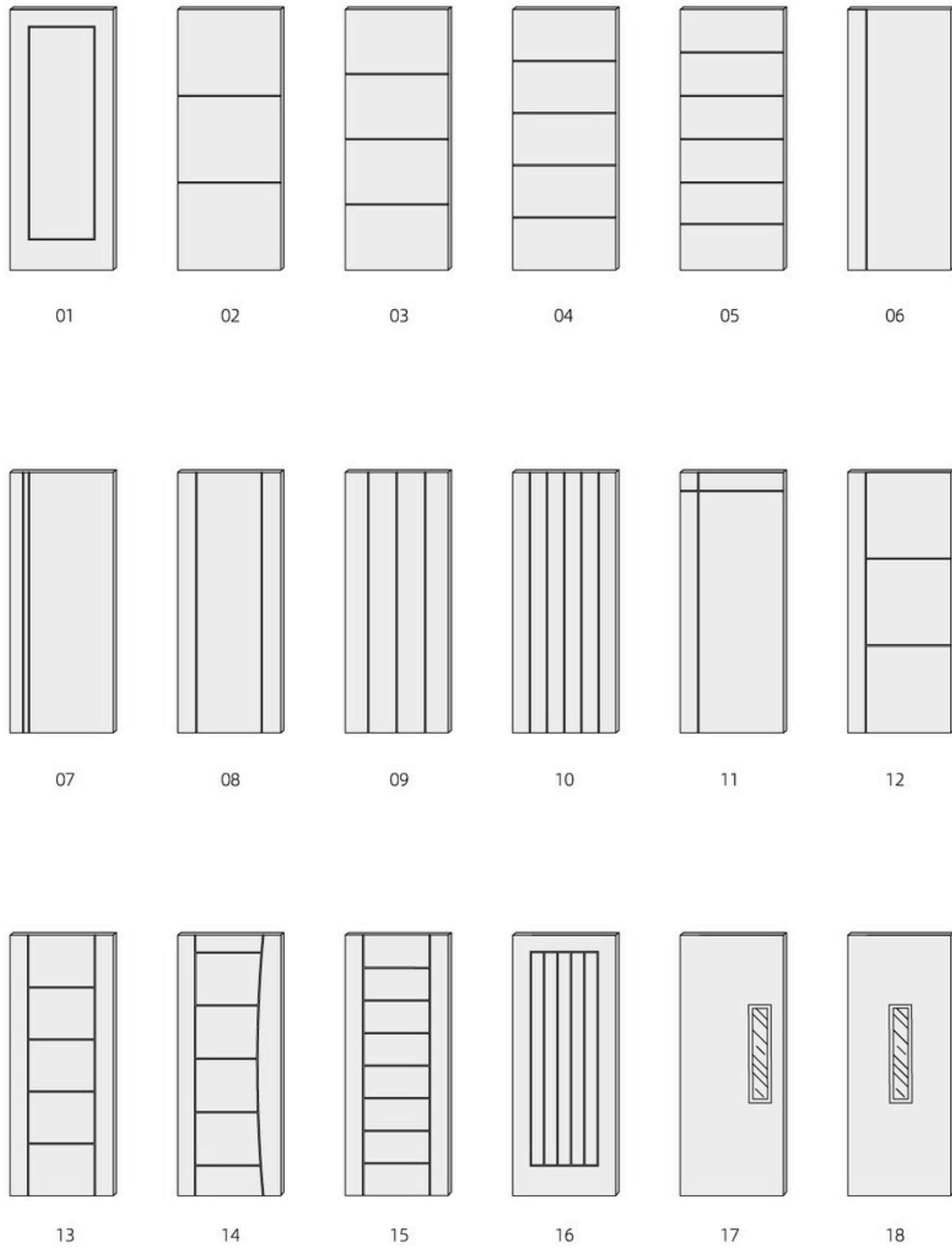
CARVING / INLAY OPTIONS

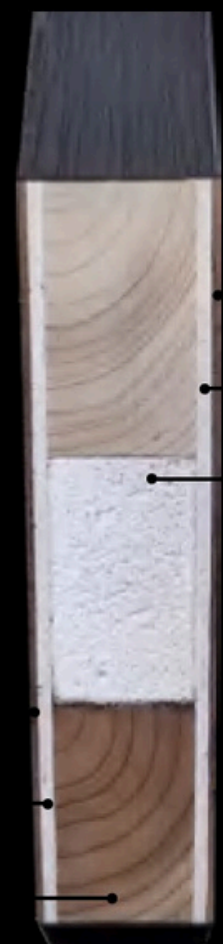
Customized metal/wood trims inlay, profile carving, sometimes change a boring flush door design to a unique and beautiful one. Work with XZIC to get your unique design.





DOOR DESIGN OPTIONS





STAIN COLOR OPTIONS

COLOR OPTIONS



CL-01



CL-02



CL-03



CL-13



CL-14



CL-15



CL-04



CL-05



CL-06



CL-16



CL-17



CL-18



CL-07



CL-08



CL-09



CL-19



CL-20



CL-21



CL-10



CL-11



CL-12



CL-22



CL-23



CL-24

*XZIC offers customized paint or stained color options, and don't hesitate to contact our sales representatives for more information.

// WOODEN FRAME WOODEN LEAF FIRE DOOR

WOODEN FRAME WOODEN LEAF SINGLE DOOR



- Certified with UL/NFPA/EN/BS
- 20 minutes up to 90 minutes fire rating
- Single Door customized Max Size: 4*8 feet
- Available with handle lock



A002



A003



A004

SINGLE DOOR
WOODEN FRAME



A005



A006

WOODEN FRAME WOODEN LEAF DOUBLE DOOR

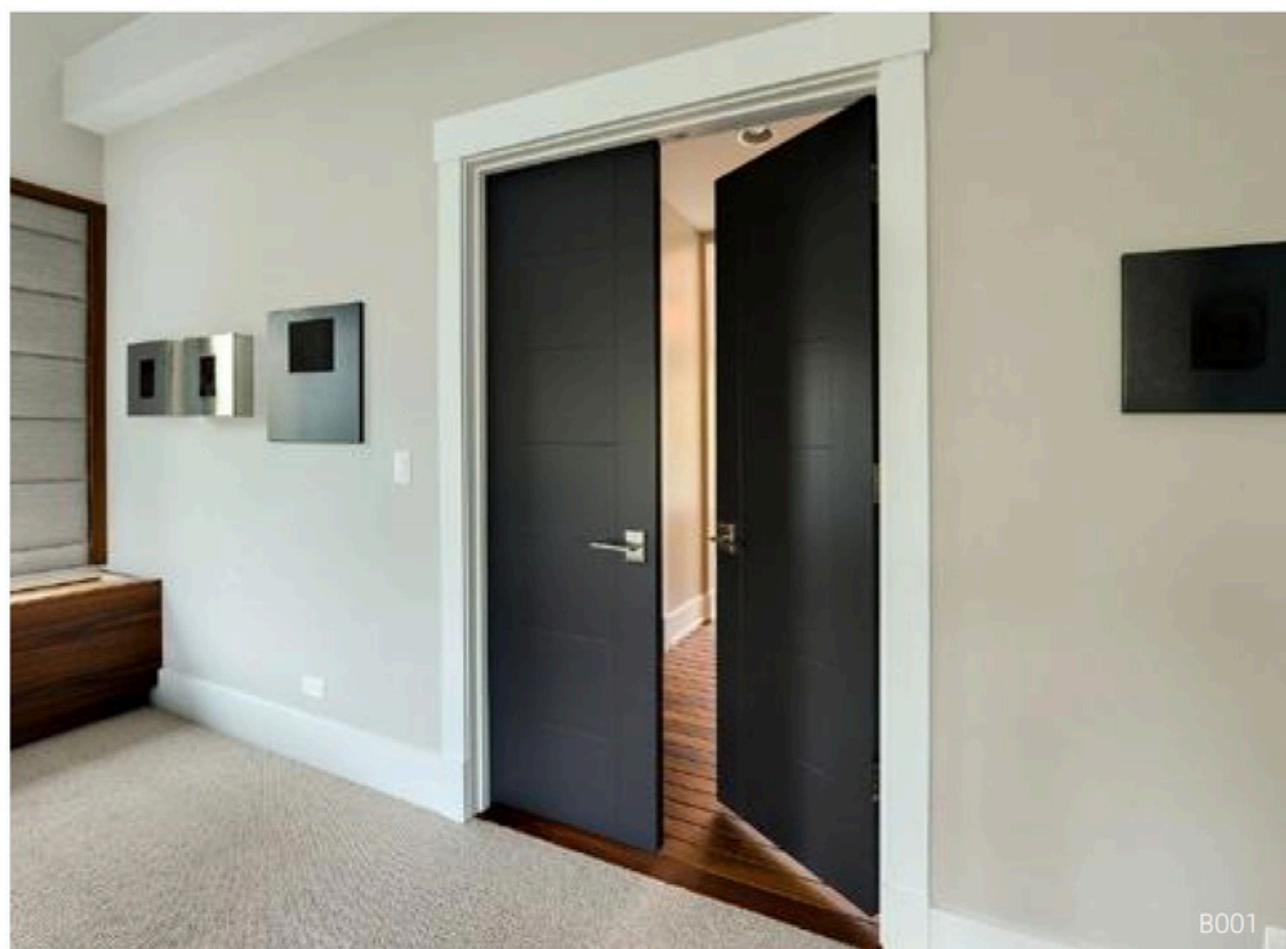
- Certified with UL/NFPA/EN/BS
- 20 minutes up to 90 minutes fire rating
- Double Door customized Max Size: 8*8 feet
- Available with panic bar



B002



B003



B001



B004



B005

// STEEL FRAME WOODEN LEAF FIRE DOOR

STEEL FRAME WOODEN LEAF SINGLE DOOR

- Certified with UL/NFPA/EN/BS
- 20 minutes up to 90 minutes fire rating
- Single Door customized Max Size: 4*8 feet



C001



C002



C003



C004



C005



C006

STEEL FRAME
SINGLE DOOR

STEEL FRAME WOODEN LEAF DOUBLE DOOR

- Certified with UL/NFPA/EN/BS
- 20 minutes up to 90 minutes fire rating
- Double Door customized Max Size: 8*8 feet
- Available with panic bar



D002



D003



D001

DOUBLE DOOR
STEEL FRAME



D004

// DOOR SURFACE TREATMENT

PVC PLASTIC LAMINATE

Plastic laminate doors offers a limitless creative license for your design interior with a resilient and strong material.

Choose from solid colors or patterns to achieve a unique or bold statement. Or choose a wood grain material to achieve consistency in appearance from door to door.



LAMINATE

This is the right choice when uniformity and heavy use applications are required. Plastic laminate is extremely tough, holding up to daily bumps and scratches.

Plus, being less porous than veneer, this surface is easier to clean. Imagine every door you spec matching exact grain and color and holding up to years of wear and tear.

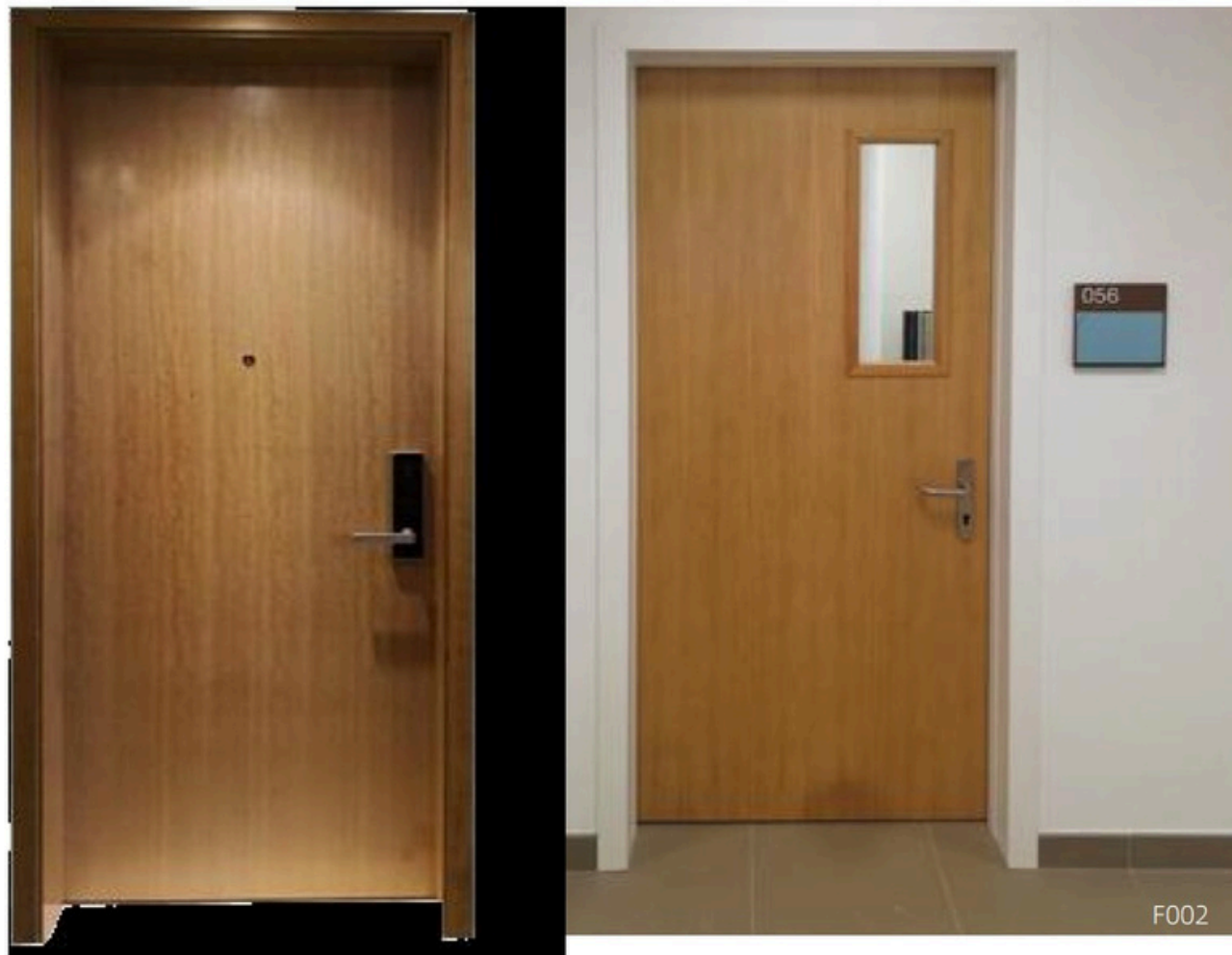
WOOD VENEERS

Wood veneer is a natural material that provides beauty, warmth and, most of all, variety. Each piece is unique, with nature producing individual shapes and colors within the same tree.

A great choice for classic or modern design, Xunzhong Door provides any commercially available wood veneer, including various species: birch, maple, oak, cherry, walnut, mahogany, and more.



Wood veneers are available in multiple grades, matches, and assemblies to meet design requirements, including domestic and exotic selections. Common veneer cutting methods include plain sliced or flat cut, quarter sliced, rift cut, and rotary.



AVAILABLE IN MULTIPLE GRADES
GREAT CHOICE

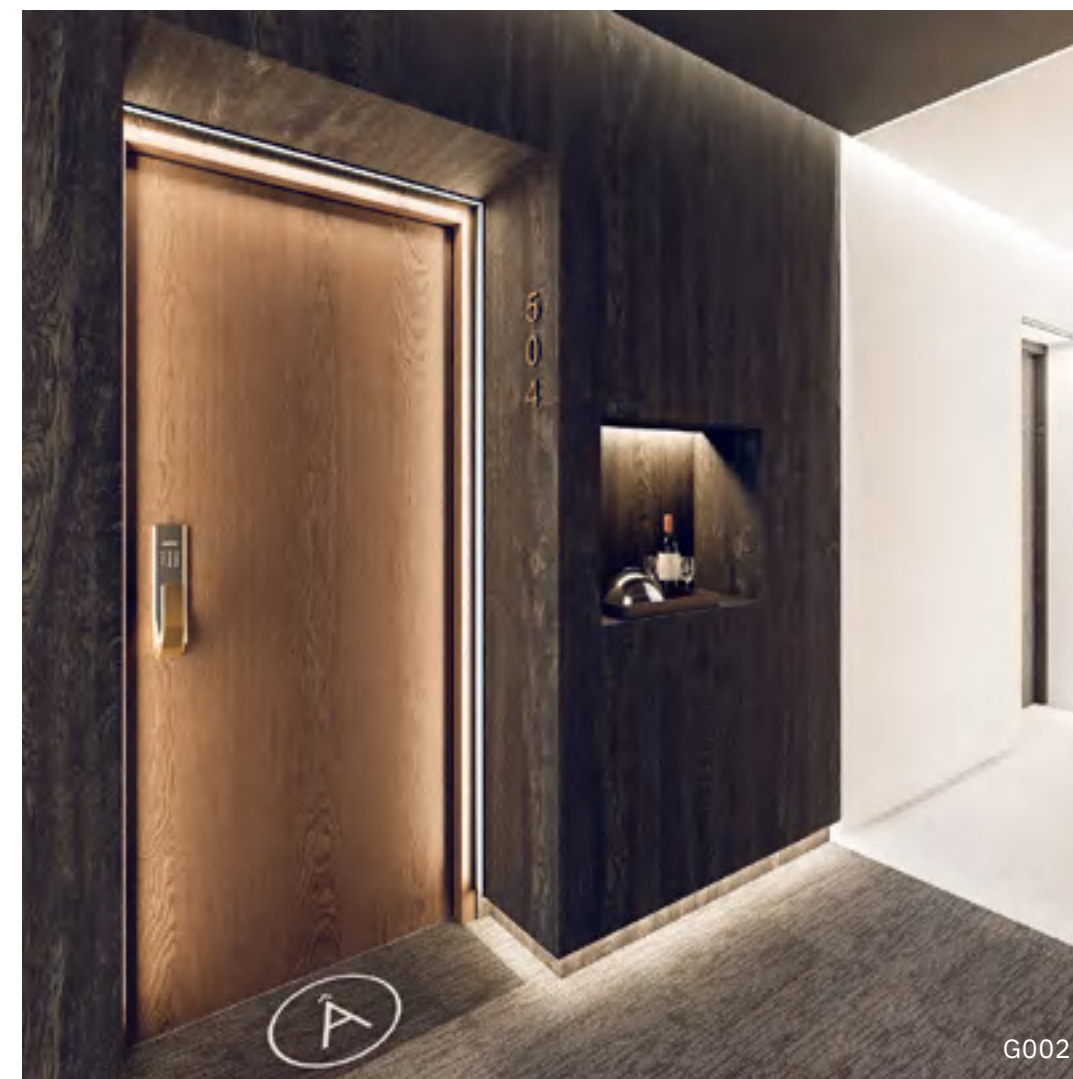


HPL

HPL is a durable and hard-wearing material that is commonly used for surfacing wood doors. It consists of multiple layers of resin-impregnated paper that are bonded together under high pressure and heat. This process creates a strong and durable surface that is resistant to scratches, abrasion, and impact.

Here are several advantages of HPL surface treatment on wood doors:

Durability: HPL is highly resistant to scratches, impact, and abrasion, making it an ideal surface treatment for high-traffic areas such as commercial buildings, hospitals, and schools.



Low maintenance: HPL is easy to clean and requires minimal maintenance, making it an excellent choice for doors in public spaces or areas that require frequent cleaning.

Design options: HPL is available in a wide range of colors, patterns, and finishes, including wood grain, matte, glossy, and textured, giving designers and architects a lot of flexibility to create the desired aesthetic.

Moisture & Waterproof Resistance : HPL laminates are manufactured with additional layers of plastic sheets to make it waterproof. This feature is another advantage for the users to install the HPL at the surface areas where the moisture level is usually high. It is resistant to humidity and moisture suitable for spaces highly exposed to such an atmosphere.

MELAMINE LAMINATED FINISH

A melamine laminated door is a type of door made by laminating a thin layer of melamine paper onto a substrate material, typically MDF (medium-density fiberboard).

The melamine paper is impregnated with melamine resin, which makes it durable, scratch-resistant, and easy to clean.

Melamine laminated wood fire doors have several surface treatment advantages, including:

Durability: The melamine laminate surface is highly durable and resistant to scratches, dents, and other types of damage. This makes them ideal for use in high-traffic areas where wear and tear are common.



Moisture resistance: The melamine laminate surface is also moisture-resistant, making it ideal for use in damp areas such as bathrooms and kitchens.

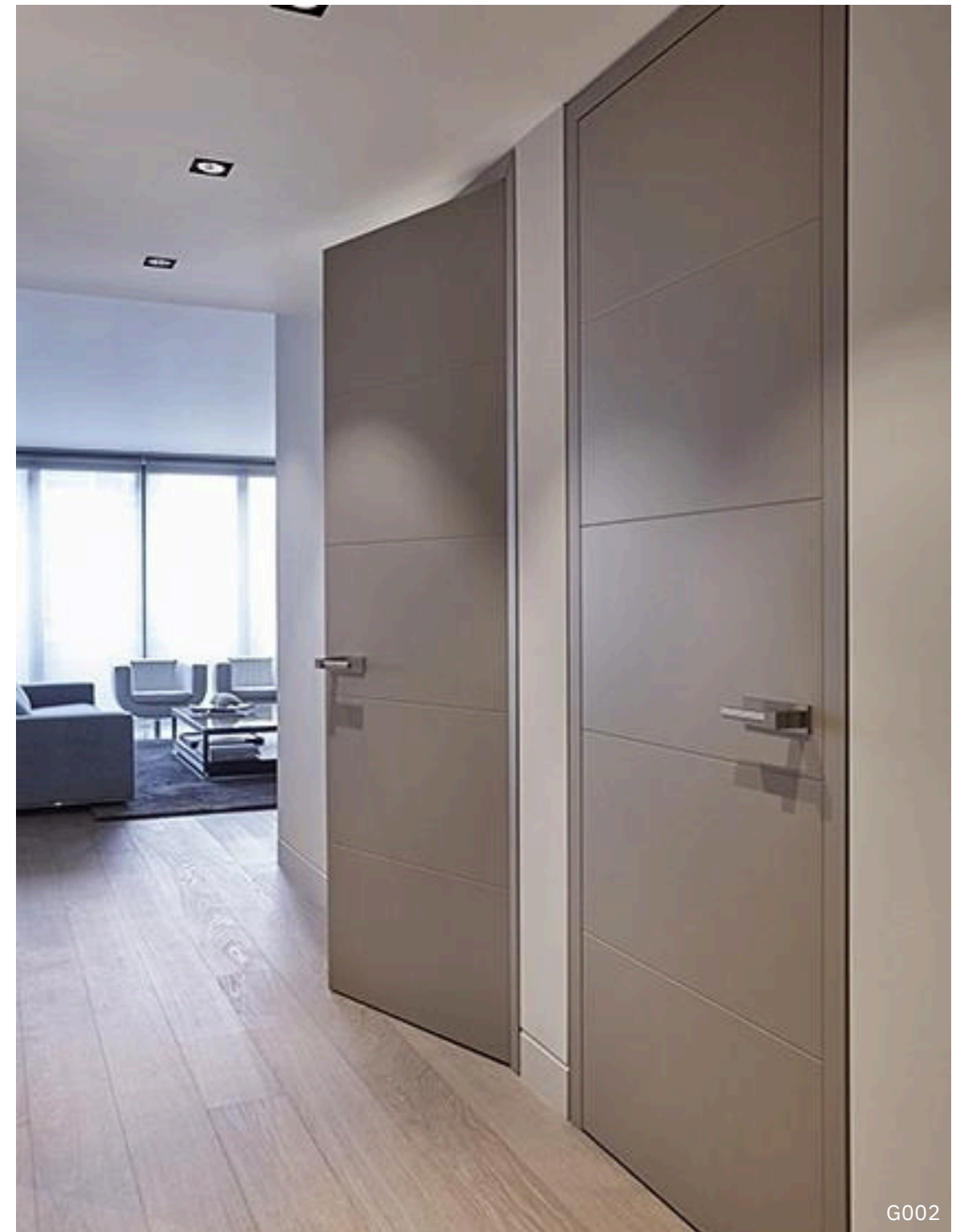
Easy to clean: The smooth surface of melamine laminated wood fire doors is easy to clean and maintain. They can be wiped down with a damp cloth, making them ideal for areas that require frequent cleaning.

Cost-effective: Compared to solid wood fire doors, melamine laminated wood fire doors are more affordable, making them an excellent choice for those on a tight budget.

Environmental friendly: Melamine laminated wood fire doors are made from recycled materials, and the manufacturing process involves minimal waste, making them an eco-friendly option.

PU PAINTING

PU is one of the most commonly used paint for door production. It has excellent comprehensive properties, such as: good construction performance, filling, fullness, hardness, ease of sanding, scratch resistance, all have good performance. PU paint is the most popular choice for wooden door painting.



It is easy to understand by the name of this coating in which a colour topcoat. The base and natural colour of wood can't be visible. One can pick any colour for its topcoat. PU coating finishes come in matte and High Gloss.

PRIMED DOORS

Before being painted, wood has to be primed first. Priming is a specific paint which seals the wood and increases adhesion to the finishing coats of paint. And as their names suggest, primed internal doors (occasionally referred to as pre-primed doors) have already received this base coat of primer in the factory. Can you paint straight onto primed doors? Indeed, you can.

Primed doors are ready to be painted the minute they've arrived. Now: White primed internal doors are the most common. This means the primer is white, allowing you to choose any colour that matches your door.



Primed doors are ready to be Normally primed doors could have 2 option of coating . UV Primer coated surface and Water-based primers . hey both are eco-friendly .

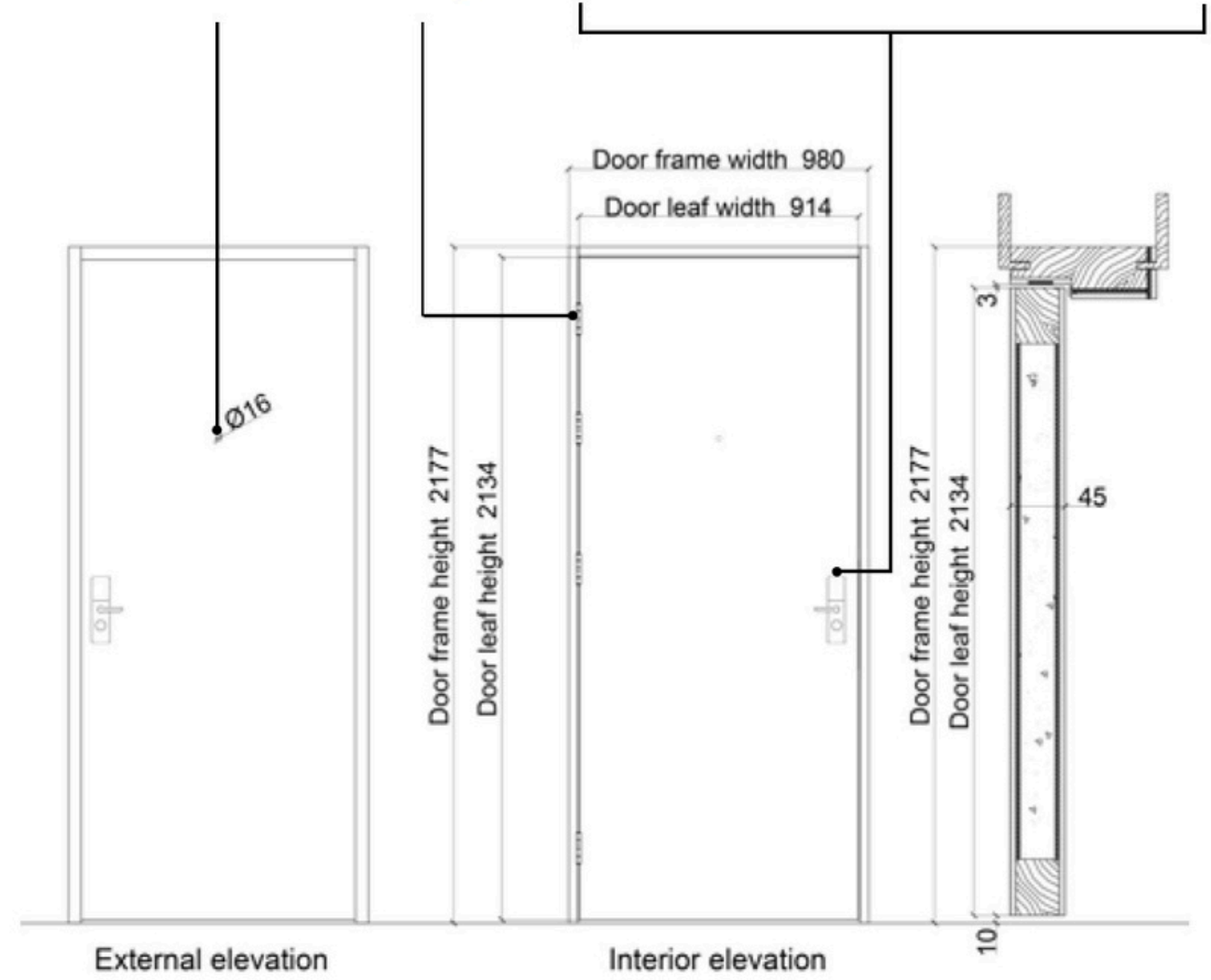
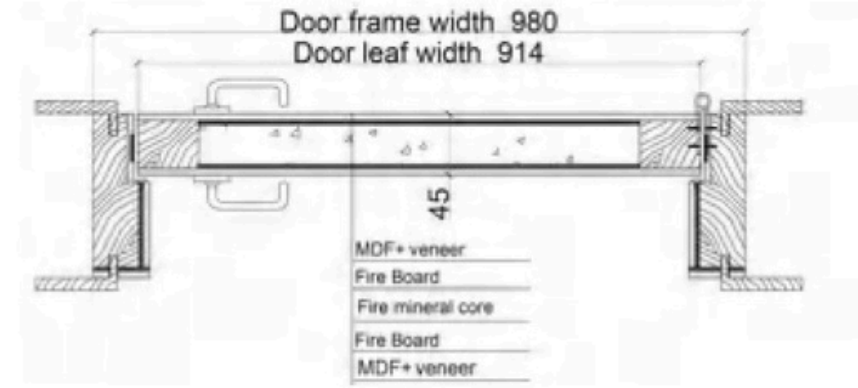


FOR MORE INTRODUCTION

A unique door design that will transform your home into a highly distinctive space.

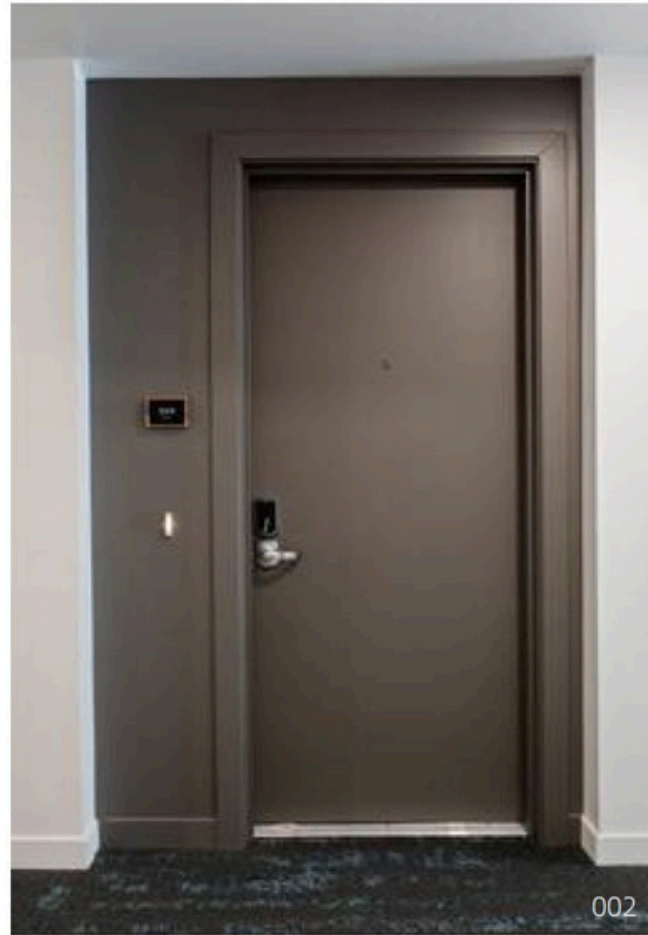


001

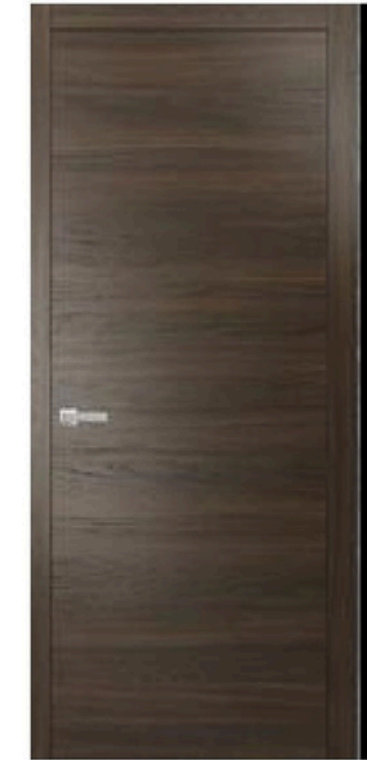




Blend the updated feel of contemporary design with more traditional details.



004



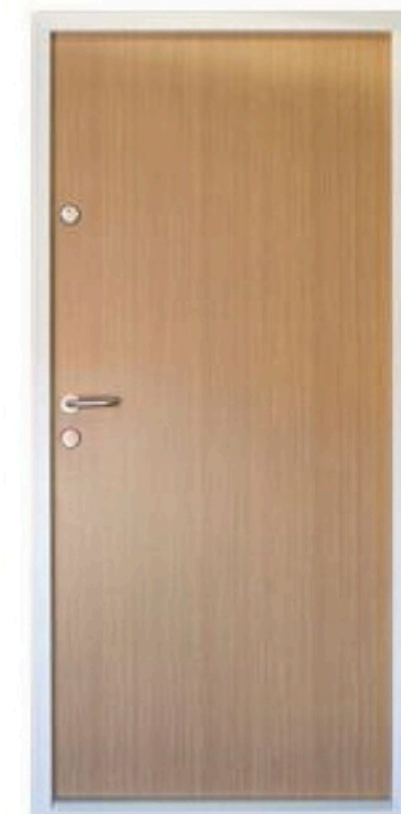
005



006



007



008



009

Functionality and refine style are combined in modern doors with an amazing range of aesthetic characteristics.



010

OFFER



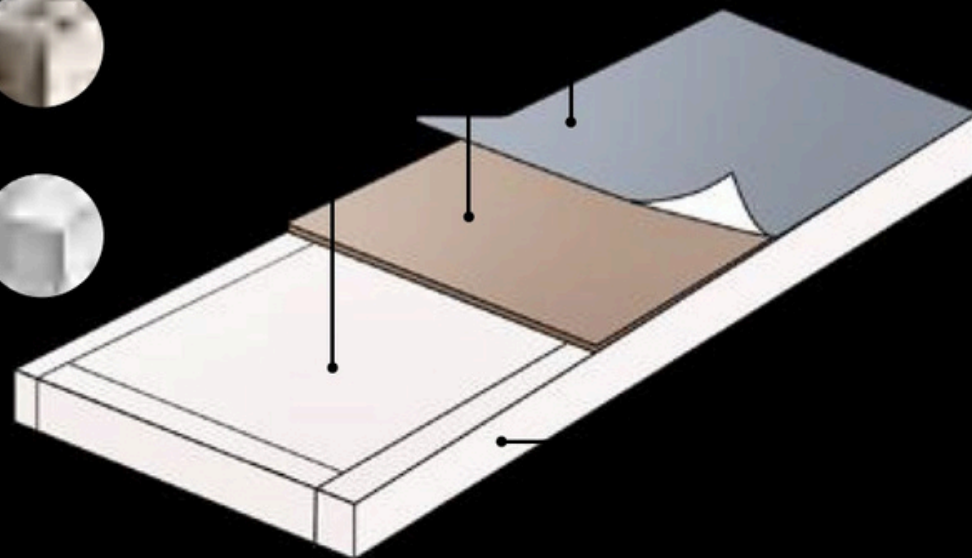
WOODEN FRE DOOR / 02

012

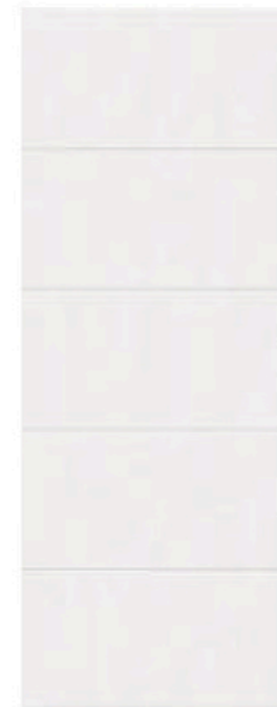


013

INTERIOR Wood Door



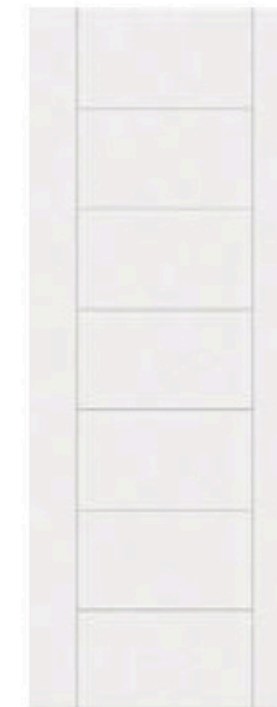
M001



M002



M003



M004



M005

➤ INTERIOR



N008




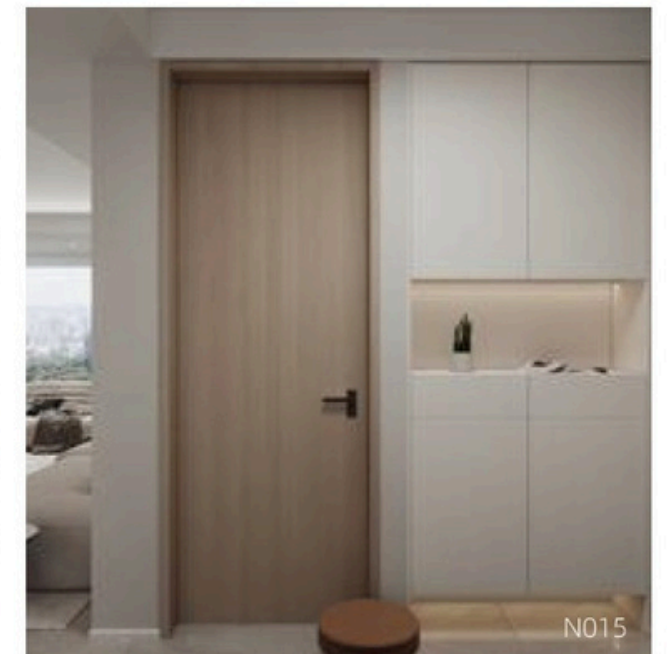
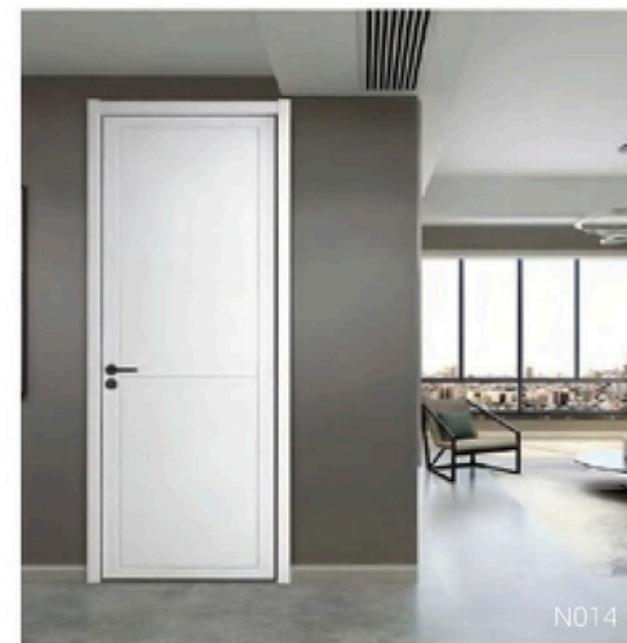
N009



N010



 DOOR



Hardware Parts



Handle 1



Handle 2



Handle 3



Handle 4



Mortise Lock 1



Mortise Lock 2



Cylinder 1



Cylinder 2



Cylindrical lock 1



Cylindrical lock 2



Mortise Lock 1



Mortise Lock 2



Mortise lock 3



Viewer



Butt Hinge 1



Spring Hinge 2



Smart Lock 1



Smart Lock 2



Smart Lock 3



Smart Lock 4



Closer 1



Closer 2



Closer 3



Closer 4



Lever trim 1



Lever trim 2



Lever trim 3



Concealed hinge



Bottom seal



Magnetic door holder



Pull & push



Push Bar



Coordinator 1



Coordinator 2



Flush bolt

PACKAGING&PRODUCTION LINE

PACKAGING

Moisture-proof, dust-proof and shock-proof package meets requirements of long-distance transport and open storage.



Storage of finished doors

Package for the products:Plastic foam+Bubble wrap +Strong carton(optional).

