



# PVC

Customization of Windows and Doors





Customized high-end PVC Door&window



**PVC COLOR**

# CONTENTS

PVC Door&window Products

- ○
  
- 1. PVC 60 CASEMENT WINDOW SERIES **05**
  
- 2. PVC 60 CASEMENT DOOR SERIES **07**
  
- 3. PVC 88 SLIDING WINDOW SERIES **09**
  
- 4. PVC 72 CASEMENT WINDOW SERIES **11**
  
- 5. PVC 72 CASEMENT DOOR SERIES **13**
  
- 6. PVC 82 CASEMENT WINDOW SERIES **15**
  
- 7. PVC 108 SLIDING WINDOW SERIES **17**
  
- 8. PVC 195 SLIDING DOOR SERIES **19**
  
- 9. PVC 195 SLIDING DOOR SERIES **21**



## PVC 60 CASEMENT WINDOW SERIES

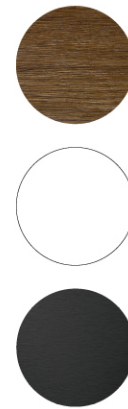
Customized high-end PVC Door&window



### Product Performance Characteristics

- 1、 Comply with the requirements of material and window & door standards
- 2、 Multi cavity structures. Excellent thermal insulation performance.
- 3、 Excellent sound insulation performance
- 4、 Various color options available
- 5、 The profile structure has superior drainage performance

### Product Color





## PVC 60 CASEMENT DOOR SERIES

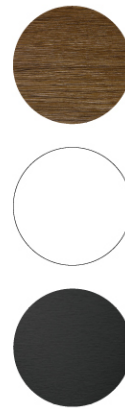
Customized high-end PVC Door&window



### Product Performance Characteristics

- 1、Comply with the requirements of material and window & door standards
- 2、Multi cavity structures. Excellent thermal insulation performance.
- 3、Excellent sound insulation performance
- 4、Various color options available
- 5、The profile structure has superior drainage performance

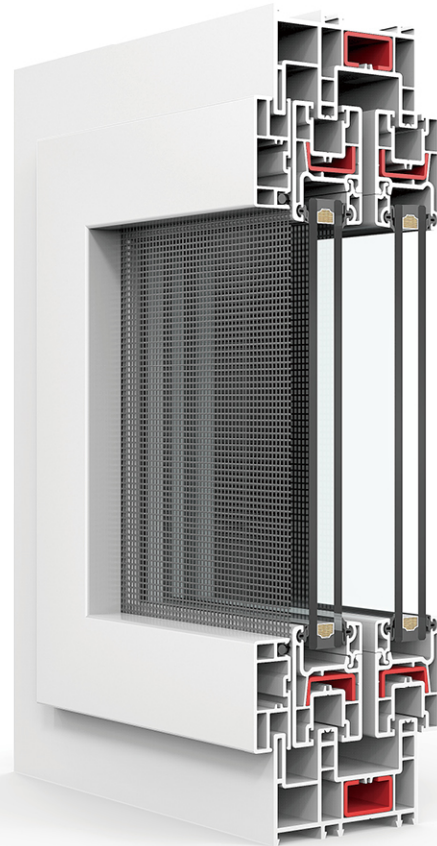
### Product Color





## PVC 88 SLIDING WINDOW SERIES

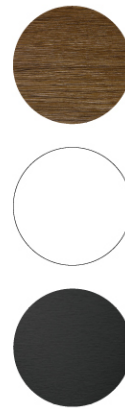
Customized high-end PVC Door&window



### Product Performance Characteristics

- 1、 Comply with the requirements of material and window & door standards
- 2、 Multi cavity structures. Excellent thermal insulation performance.
- 3、 With high cost performance
- 4、 Various color options available
- 5、 The profile structure has remarkable drainage performance

### Product Color





## PVC 72 CASEMENT WINDOW SERIES

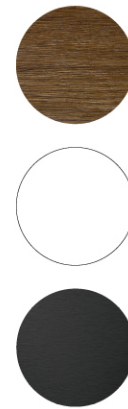
Customized high-end PVC Door&window



### Product Performance Characteristics

- 1、 German calcium and zinc formula. After long-term inspection, it's firm and stable.
- 2、 Soft and long-lasting color. Even and smooth surface. Soft and delicate.
- 3、 The welding angle and impact strength are 5% to 15% higher than those of regular UPVC materials.
- 4、 Various color options available
- 5、 Triple sealing provides outstanding water tightness and air tightness.

### Product Color





## PVC 72 CASEMENT DOOR SERIES

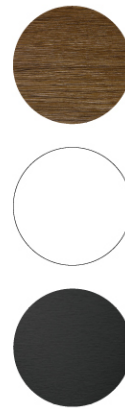
Customized high-end PVC Door&window



### Product Performance Characteristics

- 1、 German calcium and zinc formula. After long-term inspection, it's firm and stable.
- 2、 Soft and long-lasting color. Even and smooth surface. Soft and delicate.
- 3、 The welding angle and impact strength are 5% to 15% higher than those of regular UPVC materials.
- 4、 Various color options available
- 5、 Triple sealing provides outstanding water tightness and air tightness.

### Product Color





## PVC 82 CASEMENT WINDOW SERIES

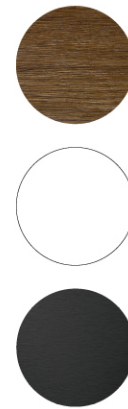
Customized high-end PVC Door&window



### Product Performance Characteristics

- 1、 German calcium and zinc formula. After long-term inspection, it's firm and stable.
- 2、 Soft and long-lasting color. Even and smooth surface. Soft and delicate.
- 3、 The welding angle and impact strength are 5% to 15% higher than those of regular UPVC materials.
- 4、 Various color options available
- 5、 Triple sealing provides outstanding water tightness and air tightness.

### Product Color





## PVC 108 SLIDING WINDOW SERIES

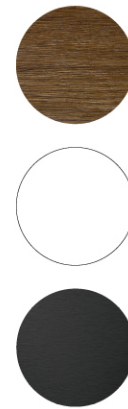
Customized high-end PVC Door&window



### Product Performance Characteristics

- 1、 Comply with the requirements of material and window & door standards
- 2、 Multi cavity structures. Excellent thermal insulation performance.
- 3、 With high cost performance
- 4、 Various color options available
- 5、 The profile structure has remarkable drainage performance

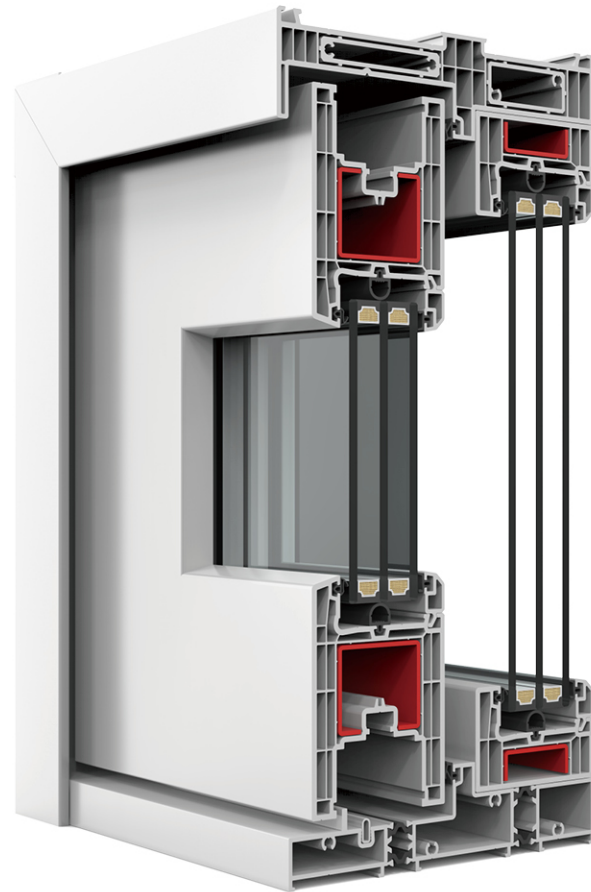
### Product Color





## PVC 195 SLIDING DOOR SERIES

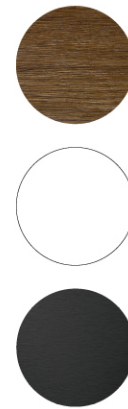
Customized high-end PVC Door&window



### Product Performance Characteristics

- 1、 German calcium and zinc formula. After long-term inspection, it's firm and stable.
- 2、 Soft and long-lasting color. Even and smooth surface. Soft and delicate.
- 3、 The welding angle and impact strength are 5% to 15% higher than those of regular UPVC materials.
- 4、 Various color options available
- 5、 The profile structure has superior drainage performance

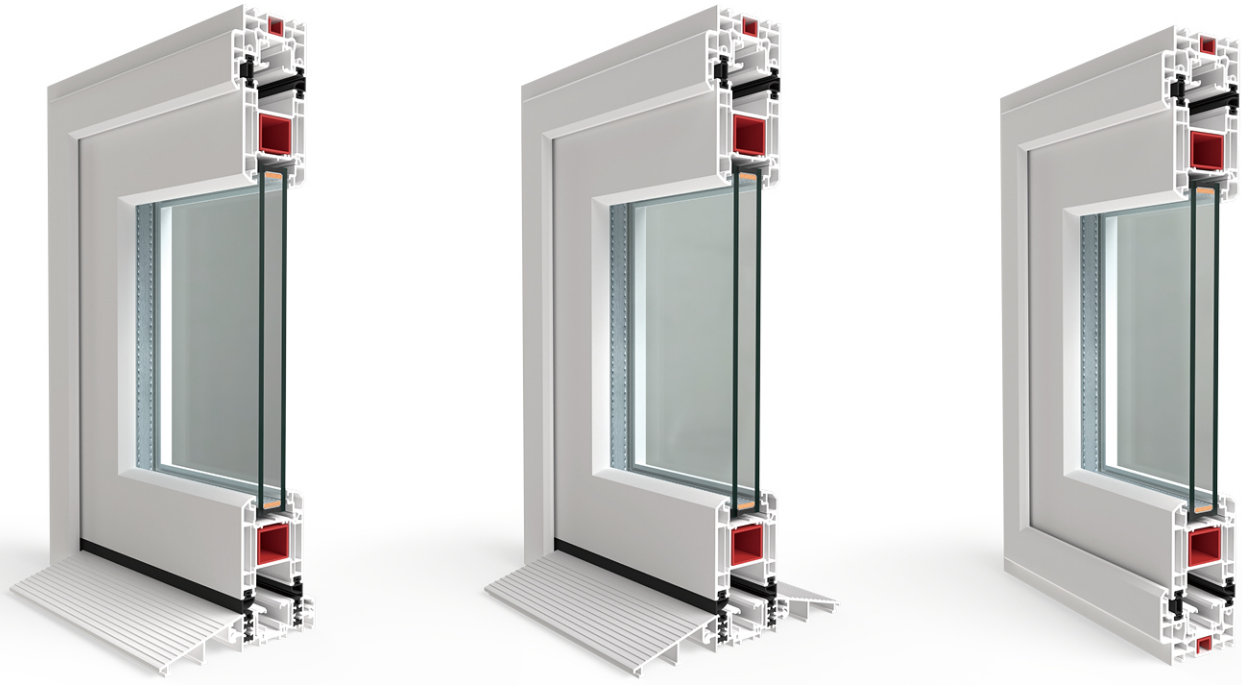
### Product Color





## PVC FOLDING DOOR SERIES

Customized high-end PVC Door&window



### Product Performance Characteristics

- 1、 German calcium and zinc formula. After long-term inspection, it's firm and stable.
- 2、 Soft and long-lasting color. Even and smooth surface. Soft and delicate.
- 3、 The welding angle and impact strength are 5% to 15% higher than those of regular UPVC materials.
- 4、 Various color options available
- 5、 The profile structure has superior drainage performance

### Product Color

