

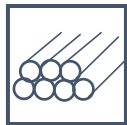
2023



175/220 series

RSF INTERNATIONAL TRADING INNOVATION & BUILDER SOLUTION

Aluminium Alloy Shutter Pavilion Product Manual



Aluminium
alloy



Wireless
remote control



Wind
resistance



Double
blade



Support
customization



water
proof

PRODUCT INTRODUCTION



Aluminum Pergola

It is a new type of sunshade canopy with excellent sunshade, heat insulation, rain proof, wind resistance, stable and durable functions. The precise louver structure technology and drainage system enable the blades to completely block the light and rain after closing, and resist the wind environment of 100km/h to minimize the interference of external weather on the sunshade space. The opening and closing angles of the blades are controlled by the flip of the blades to adjust the light and ventilation. It can also be combined with the lamp belt, ceiling fan and windproof curtain to form an ecological sunshine room, so that you and your family can enjoy high-quality outdoor comfortable life.



Closed state



Open state

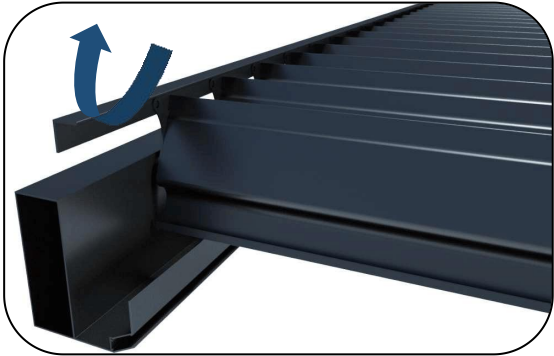


Water tank



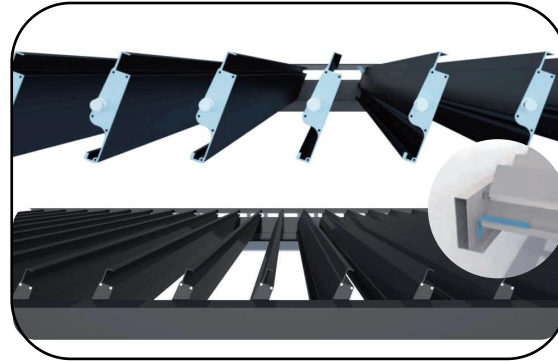
Built-in light strip

PRODUCT ADVANTAGE



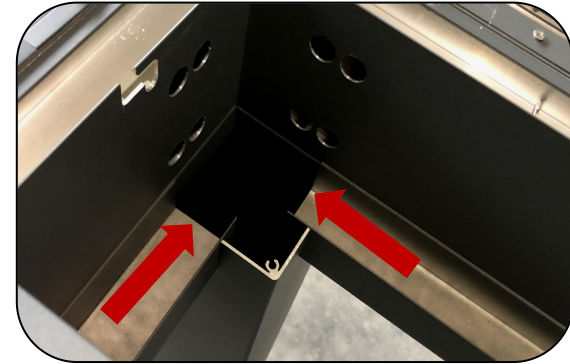
① Great Open Angle

Blade opening and closing Angle up to 150°, according to the demand to adjust shading degree and air intake volume.



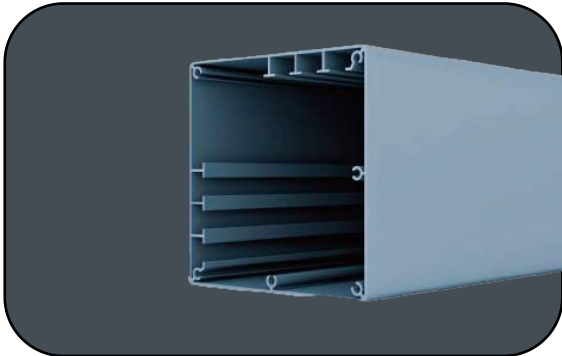
② Double blade with flume

The louvers are equipped with side drainage systems. Even if they are opened after a heavy rain, the water will flow from the blades into the tank without drip.



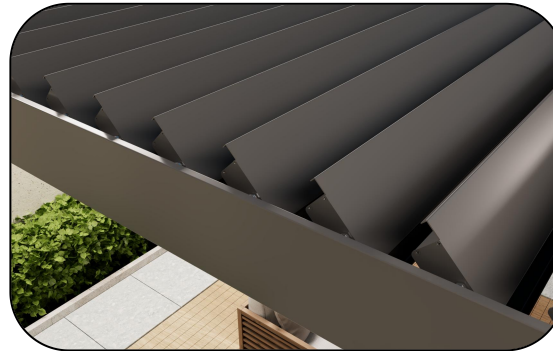
③ Hidden drainage

The concealed drainage system allows rainwater to drain directly from the top of the louvers into the columns and then out through underground drainage channels.



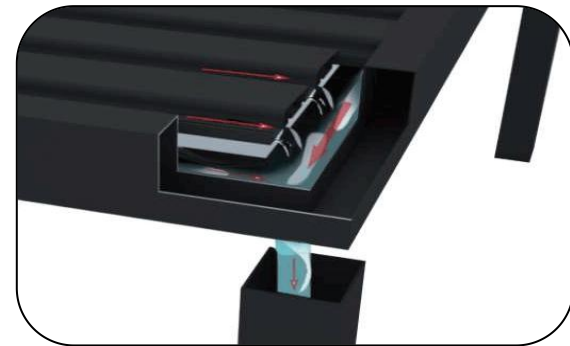
④ Flat load 100 kg

The column is larger and thicker, the beam is larger and thicker, the blade is wider and thicker, and the real material is more stable and durable. Snow pressure resistance up to 110kg/ square meter



⑤ Aluminum alloy & Powder coating

Made of high-quality 6063 aluminum alloy, set strong wind pressure resistance, corrosion resistance, deformation resistance in one; Surface high density powder spraying, no corrosion, no maintenance, safety and environmental protection, 20 years do not fade.



⑥ Dual drainage system

Can effectively prevent the surrounding rain splash, the top surface can resist the duration of 2 minutes, the intensity of up to 40-50 ml/s/square meters of rain.



175 type

Medium electric/manual model
A single blade can do 3.5-4 meters



Blade width: 175mm; Blade thickness: 40mm; Profile thickness: 1.5mm



Beam width: 175mm; Beam thickness: 2.0mm; Thickness of water tank: 1.5mm



Column size: 150*150mm; Optional size: 180*180mm; Profile thickness: 2.2-3.0mm

Product type

Beam sink separate design

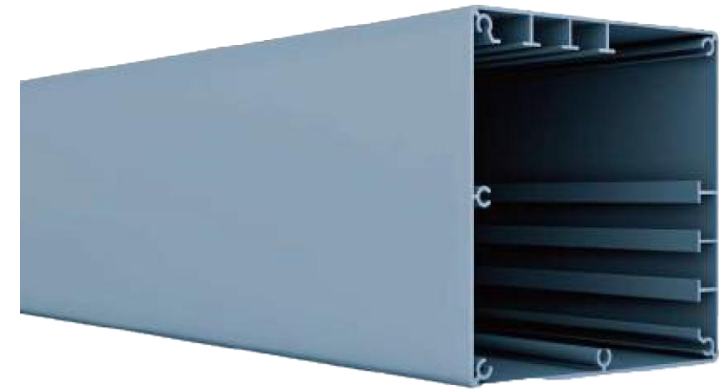




Blade width: 220mm; Blade thickness: 55mm; Profile thickness: 1.8mm



Beam width: 280mm; Beam thickness: 2.5mm; Thickness of water tank: 1.8mm



Column size: 150*150mm; Optional size: 180*180mm; Profile thickness: 2.2-3.0mm

220 type

Heavy-duty electric model
A single blade can do 5 meters

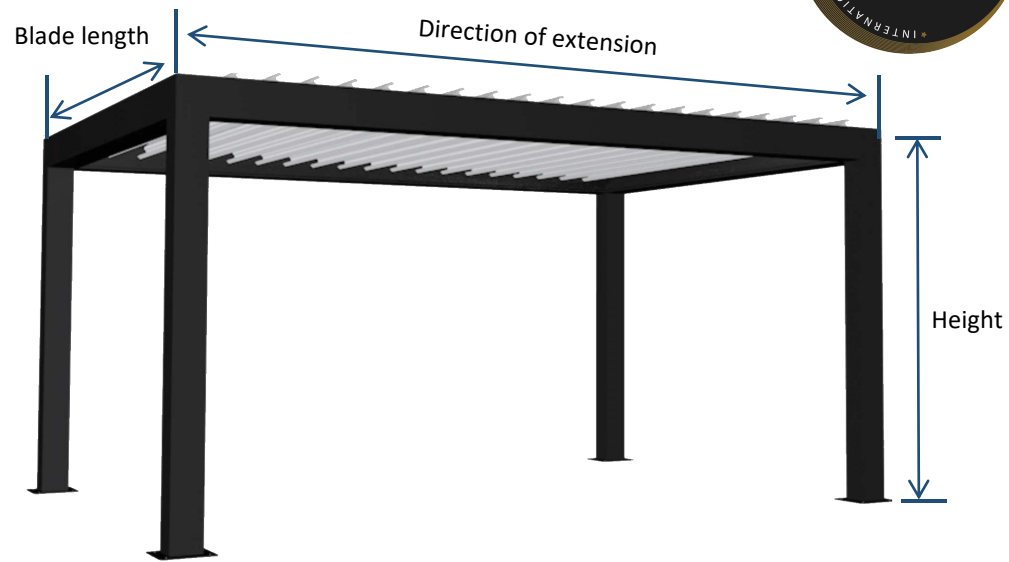


Product type

Beam water trough separated design, large span installation without deformation



175-type		Direction of extension												
		2000	2500	3000	3500	4000	4500	5000	5500	6000	6500			
Blade length	2000	√							Need custom assembly					
	2500													
	3000													
	3500													
	4000													
	4500	Need custom assembly												
	5000													
	5500													
	6000													



220-type		Direction of extension												
		2000	2500	3000	3500	4000	4500	5000	5500	6000	6500			
Blade length	2000	√							Need custom assembly					
	2500													
	3000													
	3500													
	4000													
	4500	Need custom assembly												
	5000													
	5500													
	6000													

Note: The default height of the product is 2.7 meters.

Skeleton appearance Optional color:

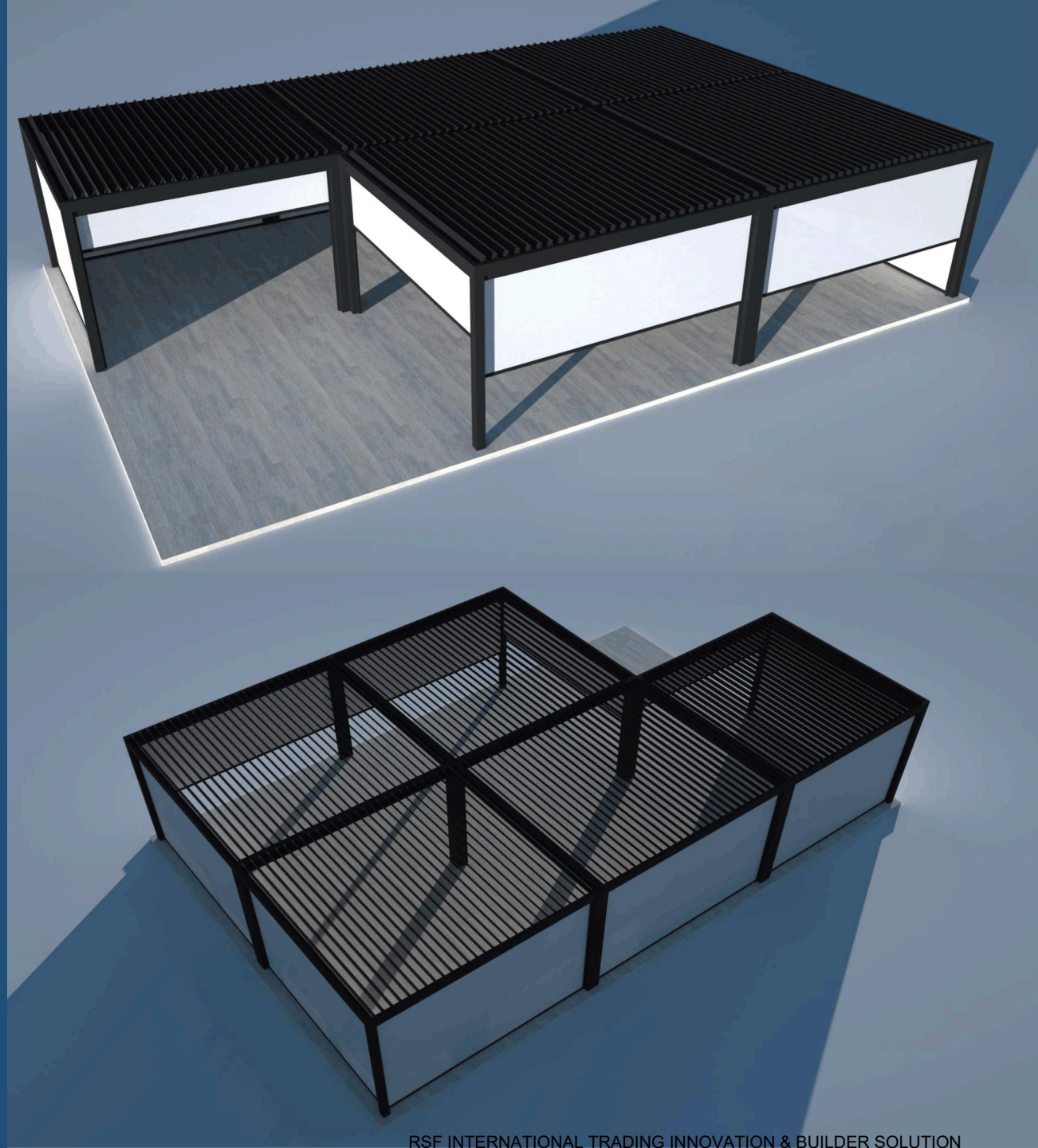
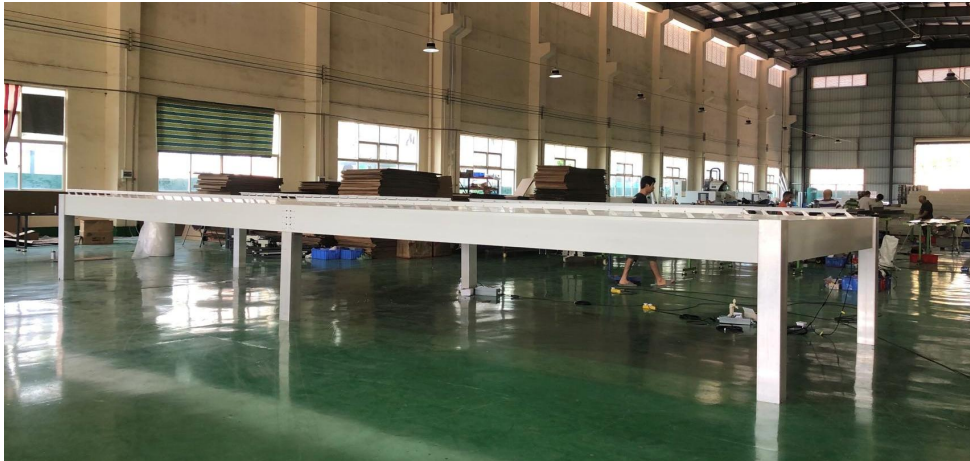


Support large size combination assembly

175type: The maximum single size without splicing can be **6.5x4 meters**

220type: The maximum single size without splicing can be **6.5x5 meters**

The combination of products can be determined according to different customized lengths. Surrounded by windproof curtains, it can become an ecological sunshine room, or even a multifunctional outdoor office area, studio, chess and card room and other application scenarios.

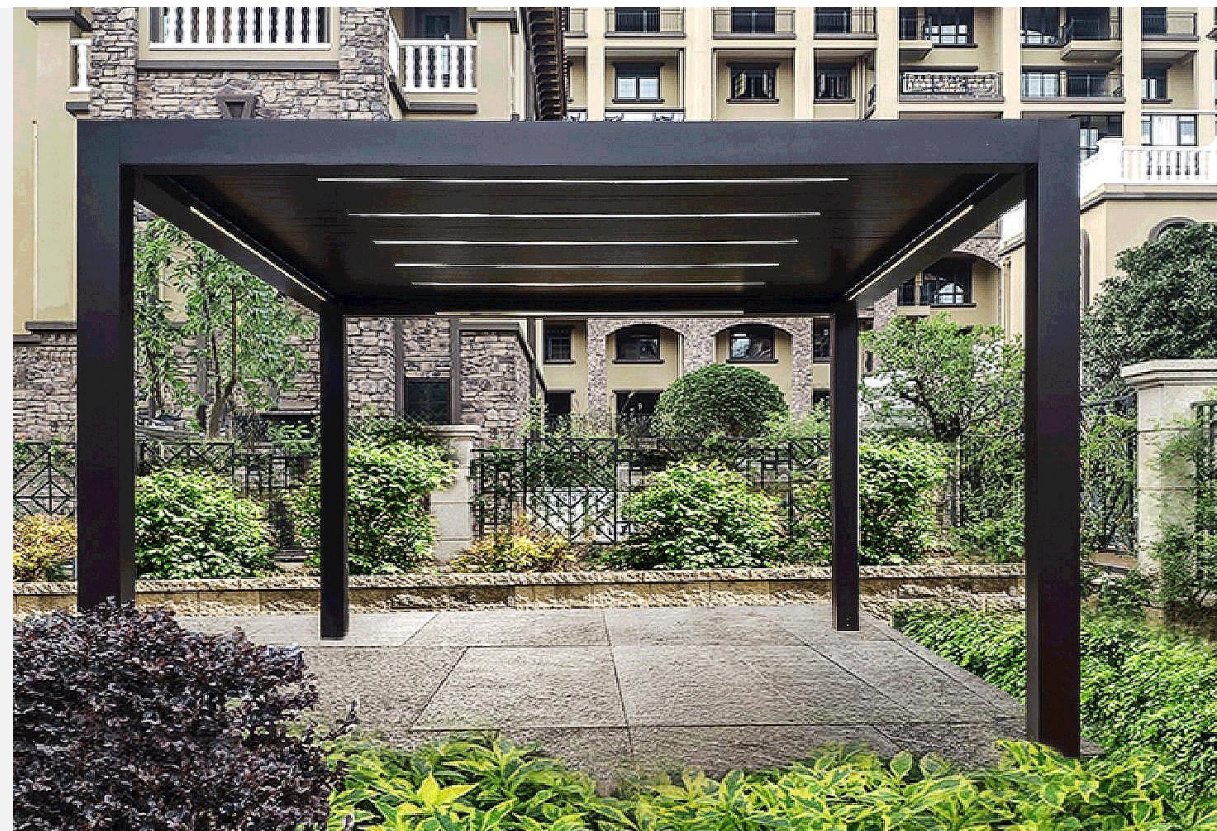


Simple Type :

The whole includes: column, beam, flip blade, beam and blade lamp belt, motor, remote control and other accessories.

Including: column, beam, flip blade, blade lamp belt, motor, remote control and other accessories.

Note: Beam light belt is only available for type 220.



European style :

On the basis of simple style, added European decorative external sink

Size: 170mm*200mm, thickness: 1.9mm

Increase the three-dimensional beauty, the shape is more atmospheric.

Including: European decorative sink, column, beam, flip board 100 blades, beam and blade lamp belt, motor, remote control and other accessories.

Note: Beam light belt is only available for type 220.



Luxury Type:

On the basis of European style, the column outside the Roman column decorative plate, so that the pavilion overall more luxurious atmosphere, three-dimensional sense is stronger, suitable for villa luxury, star hotel and other places.

Including: beam, European decorative water trough, flip 100 blades, beam and blade lamp belt, motor, remote control and other accessories, European Roman column (standard with a column pack 2, optional pack 4).

Note: Beam light belt is only available for type 220.



Top-level Type :

Based on the European luxury model, wall lamps were added outside the column and fan lamps were added in the middle of the top pavilion.

Including: European style Roman column, beam, European style decorative water tank, flip board 100 blades, beam blade lamp belt, column wall lamp, remote fan lamp, remote control, accessories, etc.

Note: Beam light belt is only available for type 220.



Night light effect



Product description :

- ① The top blade is equipped with LED light belt, and the surrounding beam is equipped with LED light belt
- ② Flexible silicone waterproof 5000K brightness Led strip lamp (standard with warm light, optional)
- ③ Oko motor 1
- ④ Oko waterproof receiver 4
- ⑤ Transformer 1, multi - channel remote control 1

Note: Beam light belt is only available for type 220.

Match with windproof curtains



Match instruction:

- ① The pavilion can be equipped with electric windproof curtain around
- ② Glass fiber fabric/polyester fiber fabric is optional
- (3) Optional opening rate 0%~10%
- (4) Optional color of rolling curtain, supporting pattern customization
- ⑤ Oke motor, equipped with multi-channel remote control,
You can control the flip of louver, light switch, wind curtain up and down;
Can also separate independent channels, control each product lift

Installation mode



Application scenario



Villa residence



Swimming pool



Garden court



Balcony



Homestay



Outdoor catering